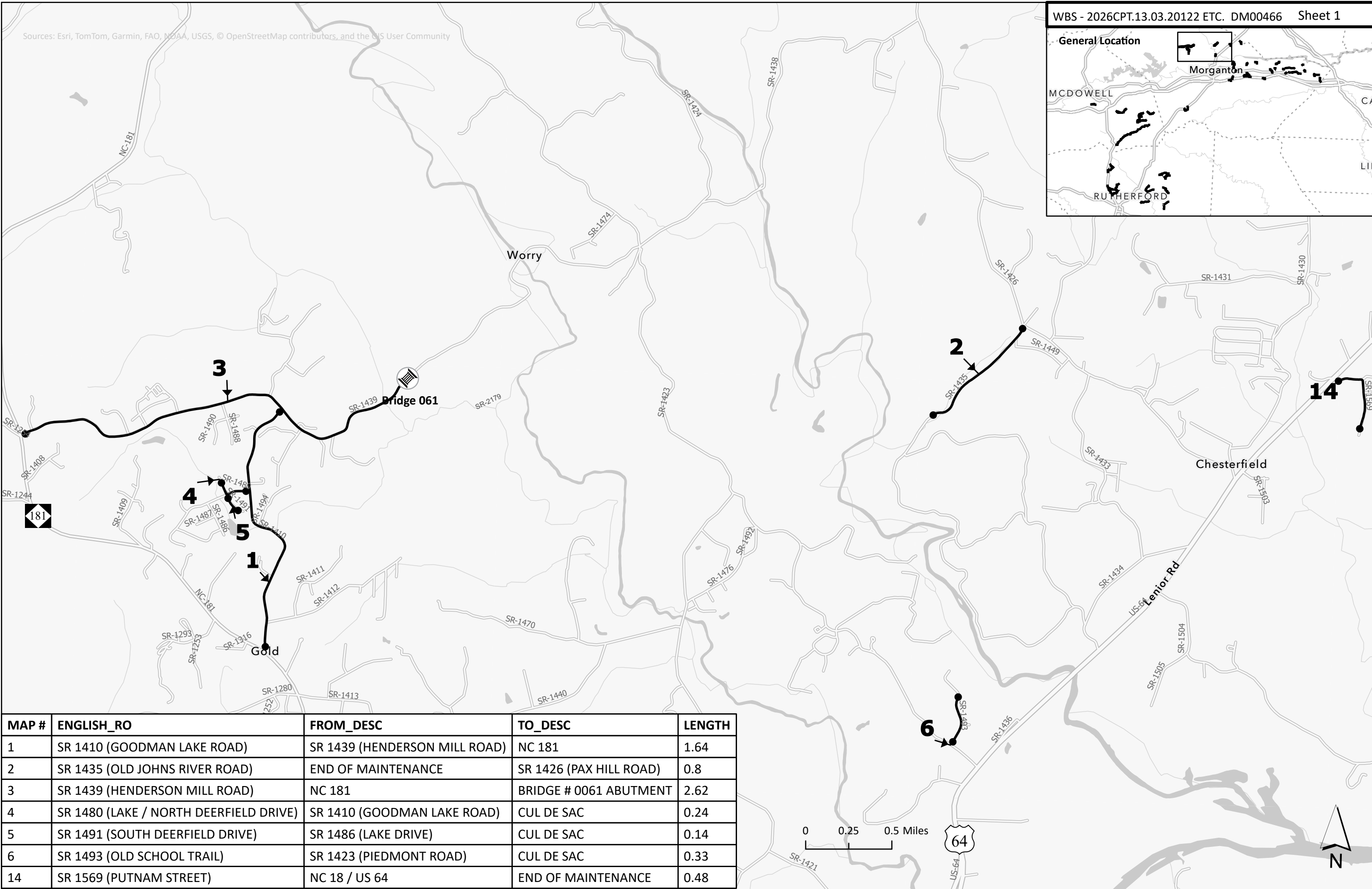
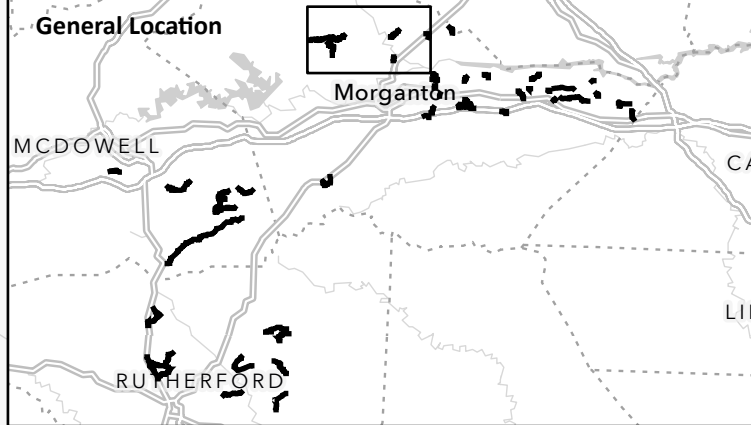
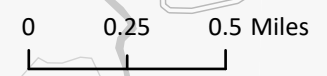


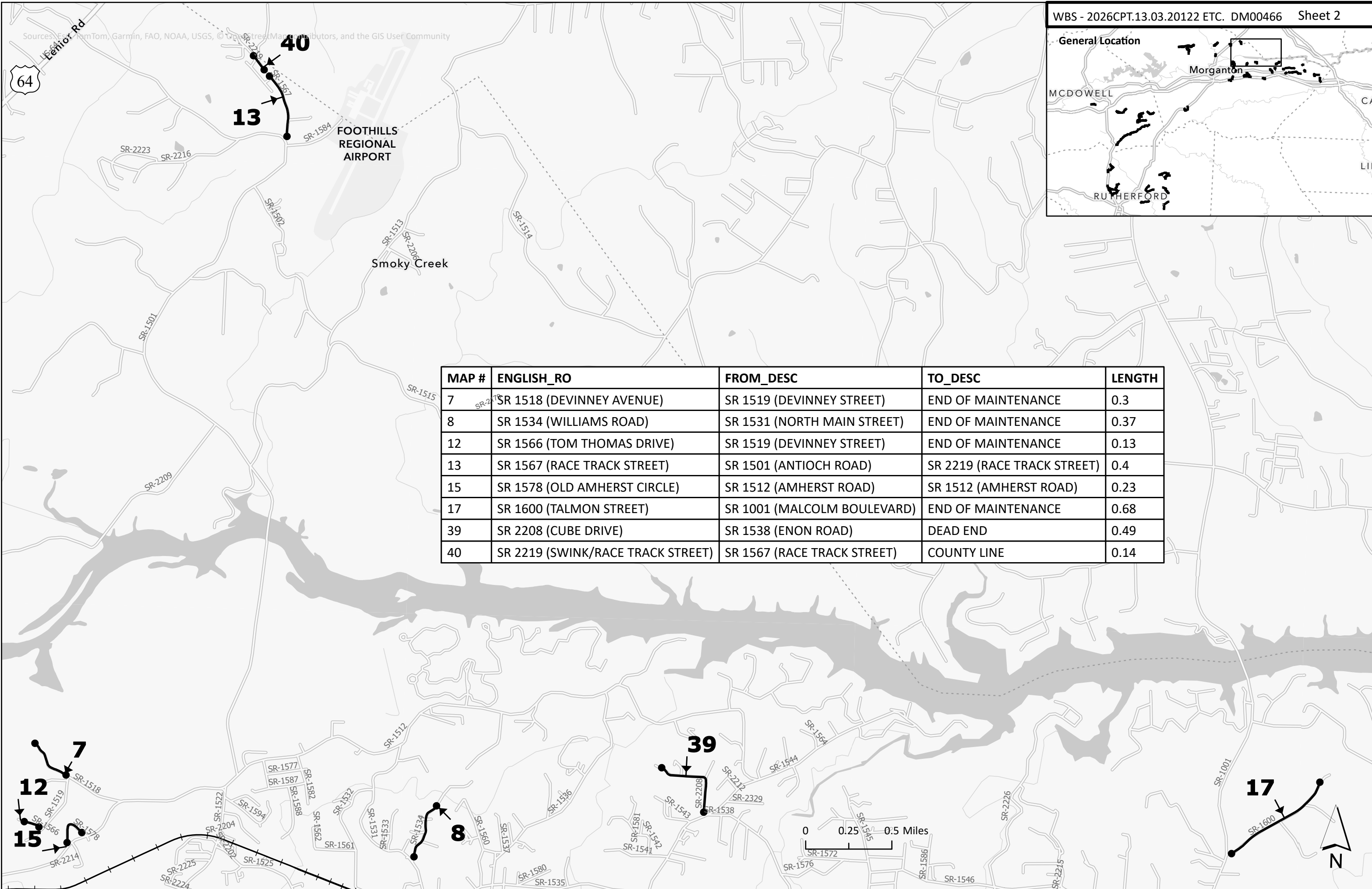
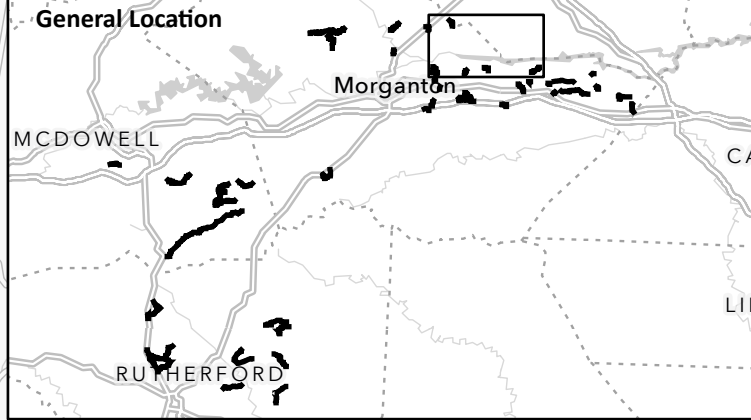
Sources: Esri, TomTom, Garmin, FAO, NOAA, USGS, © OpenStreetMap contributors, and the GIS User Community



MAP #	ENGLISH_RO	FROM_DESC	TO_DESC	LENGTH
1	SR 1410 (GOODMAN LAKE ROAD)	SR 1439 (HENDERSON MILL ROAD)	NC 181	1.64
2	SR 1435 (OLD JOHNS RIVER ROAD)	END OF MAINTENANCE	SR 1426 (PAX HILL ROAD)	0.8
3	SR 1439 (HENDERSON MILL ROAD)	NC 181	BRIDGE # 0061 ABUTMENT	2.62
4	SR 1480 (LAKE / NORTH DEERFIELD DRIVE)	SR 1410 (GOODMAN LAKE ROAD)	CUL DE SAC	0.24
5	SR 1491 (SOUTH DEERFIELD DRIVE)	SR 1486 (LAKE DRIVE)	CUL DE SAC	0.14
6	SR 1493 (OLD SCHOOL TRAIL)	SR 1423 (PIEDMONT ROAD)	CUL DE SAC	0.33
14	SR 1569 (PUTNAM STREET)	NC 18 / US 64	END OF MAINTENANCE	0.48

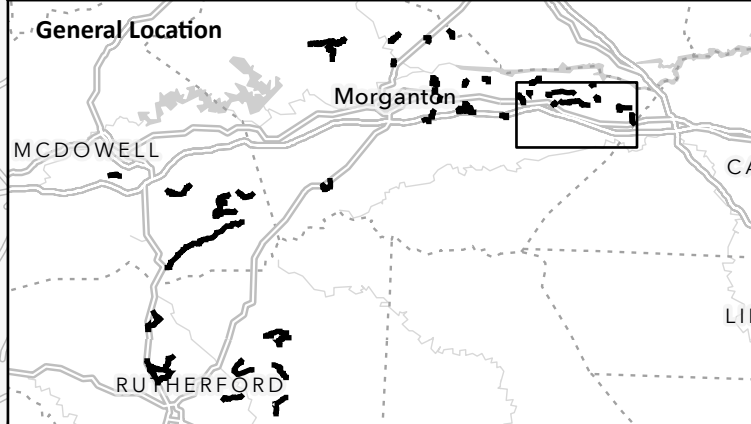
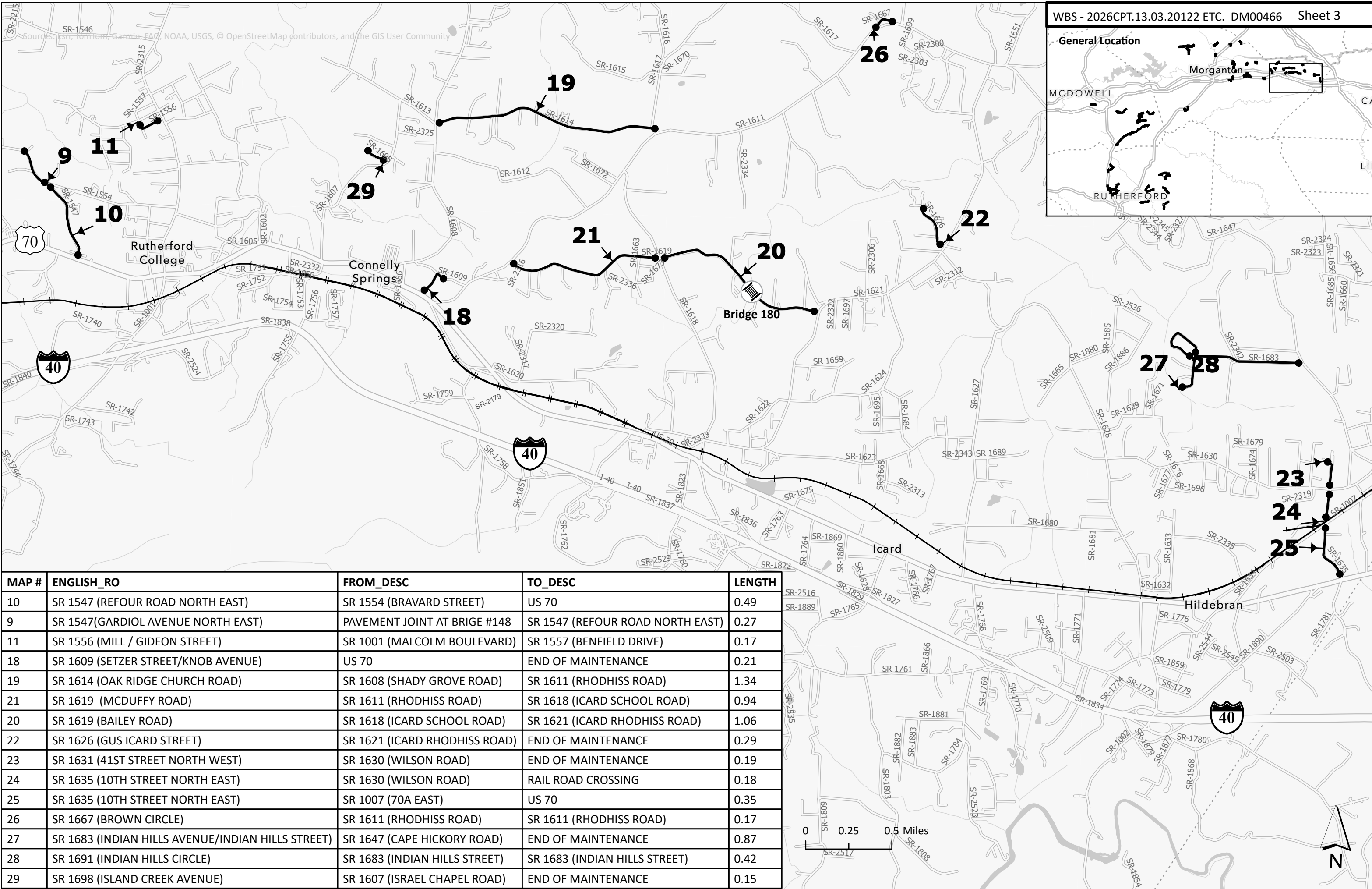


Sources: Esri, DeLorme, Garmin, FAO, NOAA, USGS, © OpenStreetMap contributors, and the GIS User Community

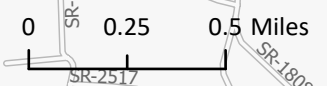


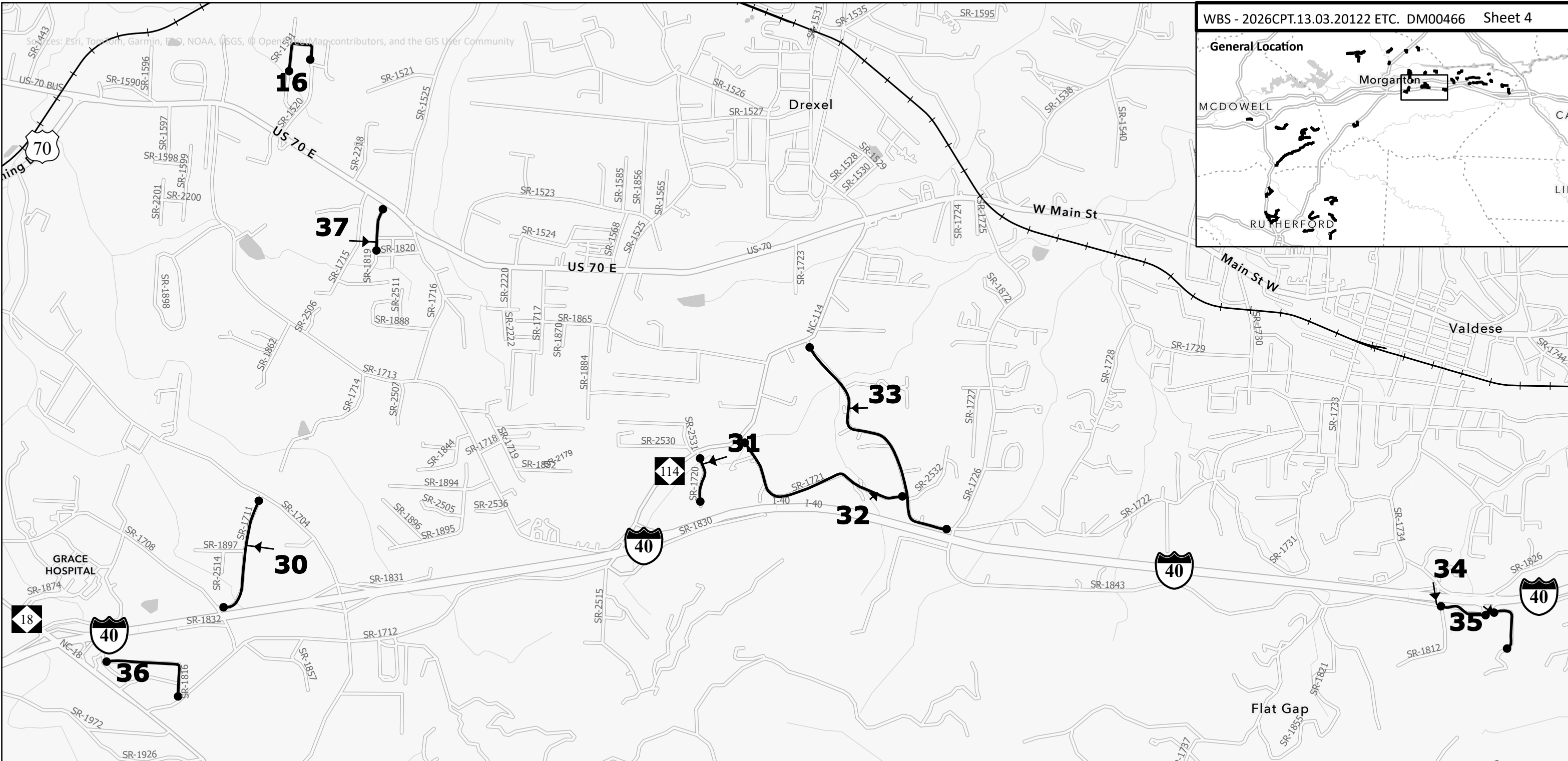
MAP #	ENGLISH_RO	FROM_DESC	TO_DESC	LENGTH
7	SR 1518 (DEVINNEY AVENUE)	SR 1519 (DEVINNEY STREET)	END OF MAINTENANCE	0.3
8	SR 1534 (WILLIAMS ROAD)	SR 1531 (NORTH MAIN STREET)	END OF MAINTENANCE	0.37
12	SR 1566 (TOM THOMAS DRIVE)	SR 1519 (DEVINNEY STREET)	END OF MAINTENANCE	0.13
13	SR 1567 (RACE TRACK STREET)	SR 1501 (ANTIOCH ROAD)	SR 2219 (RACE TRACK STREET)	0.4
15	SR 1578 (OLD AMHERST CIRCLE)	SR 1512 (AMHERST ROAD)	SR 1512 (AMHERST ROAD)	0.23
17	SR 1600 (TALMON STREET)	SR 1001 (MALCOLM BOULEVARD)	END OF MAINTENANCE	0.68
39	SR 2208 (CUBE DRIVE)	SR 1538 (ENON ROAD)	DEAD END	0.49
40	SR 2219 (SWINK/RACE TRACK STREET)	SR 1567 (RACE TRACK STREET)	COUNTY LINE	0.14



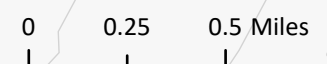


MAP #	ENGLISH_RO	FROM_DESC	TO_DESC	LENGTH
10	SR 1547 (REFOUR ROAD NORTH EAST)	SR 1554 (BRAVARD STREET)	US 70	0.49
9	SR 1547(GARDIOL AVENUE NORTH EAST)	PAVEMENT JOINT AT BRIGE #148	SR 1547 (REFOUR ROAD NORTH EAST)	0.27
11	SR 1556 (MILL / GIDEON STREET)	SR 1001 (MALCOLM BOULEVARD)	SR 1557 (BENFIELD DRIVE)	0.17
18	SR 1609 (SETZER STREET/KNOB AVENUE)	US 70	END OF MAINTENANCE	0.21
19	SR 1614 (OAK RIDGE CHURCH ROAD)	SR 1608 (SHADY GROVE ROAD)	SR 1611 (RHODHISS ROAD)	1.34
21	SR 1619 (MCDUFFY ROAD)	SR 1611 (RHODHISS ROAD)	SR 1618 (ICARD SCHOOL ROAD)	0.94
20	SR 1619 (BAILEY ROAD)	SR 1618 (ICARD SCHOOL ROAD)	SR 1621 (ICARD RHODHISS ROAD)	1.06
22	SR 1626 (GUS ICARD STREET)	SR 1621 (ICARD RHODHISS ROAD)	END OF MAINTENANCE	0.29
23	SR 1631 (41ST STREET NORTH WEST)	SR 1630 (WILSON ROAD)	END OF MAINTENANCE	0.19
24	SR 1635 (10TH STREET NORTH EAST)	SR 1630 (WILSON ROAD)	RAIL ROAD CROSSING	0.18
25	SR 1635 (10TH STREET NORTH EAST)	SR 1007 (70A EAST)	US 70	0.35
26	SR 1667 (BROWN CIRCLE)	SR 1611 (RHODHISS ROAD)	SR 1611 (RHODHISS ROAD)	0.17
27	SR 1683 (INDIAN HILLS AVENUE/INDIAN HILLS STREET)	SR 1647 (CAPE HICKORY ROAD)	END OF MAINTENANCE	0.87
28	SR 1691 (INDIAN HILLS CIRCLE)	SR 1683 (INDIAN HILLS STREET)	SR 1683 (INDIAN HILLS STREET)	0.42
29	SR 1698 (ISLAND CREEK AVENUE)	SR 1607 (ISRAEL CHAPEL ROAD)	END OF MAINTENANCE	0.15

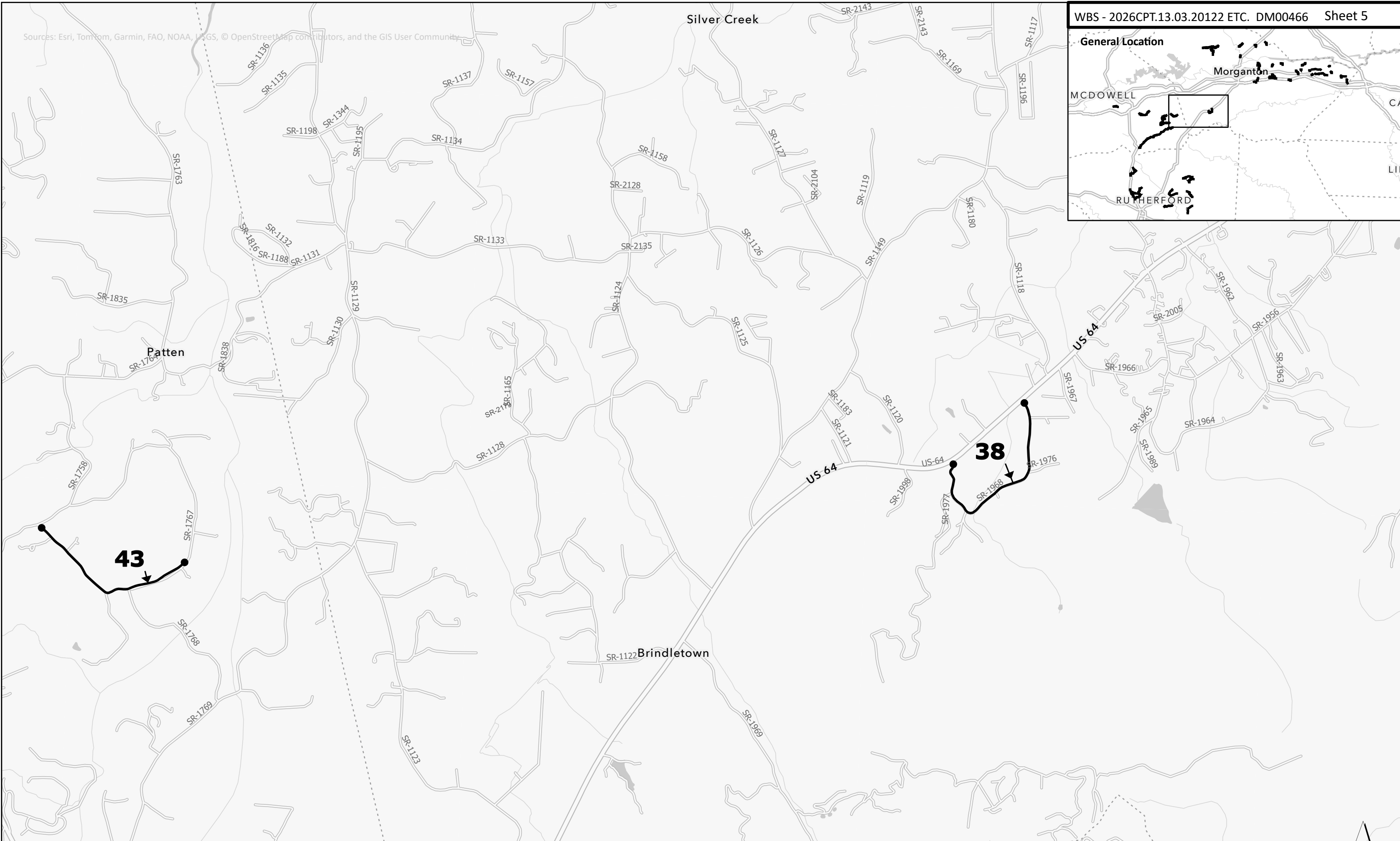
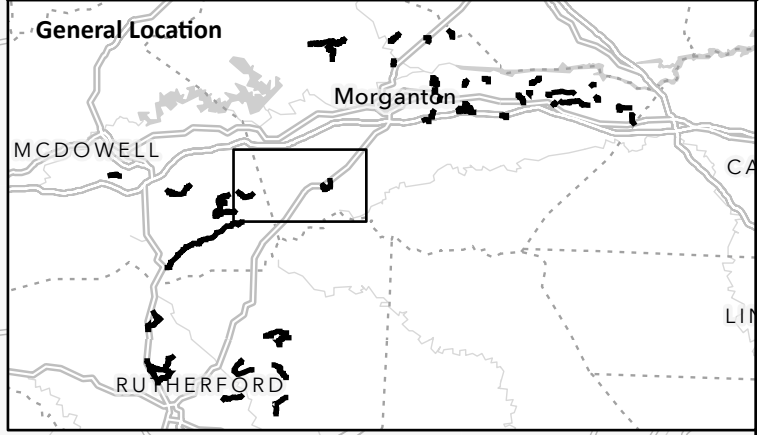




MAP #	ENGLISH_RO	FROM_DESC	TO_DESC	LENGTH
16	SR 1591 (EASTBROOK CIRCLE)	PAVEMENT JOINT	SR 1520 (WALL STREET)	0.27
30	SR 1711 (BLANTON ROAD)	SR 1704 (BETHEL ROAD)	SR 1708 (EAST PARKER ROAD)	0.5
31	SR 1720 (RECTOR STREET)	NC 114	END OF MAINTENANCE	0.21
32	SR 1721 (COOK ROAD)	NC 114	SR 1726 (HIGH PEAK ROAD)	0.82
33	SR 1726 (HIGH PEAK ROAD)	SR 1843 (MESSER ROAD)	NC 114	1.03
34	SR 1734 (MILLSTONE AVENUE)	SR 1737 (FLAT GAP ROAD)	.01 MILE PAST I 40 ON RAMP	0.22
35	SR 1734 (MILLSTONE AVENUE)	.01 MILE PAST I 40 ON RAMP	END OF MAINTENANCE	0.25
36	SR 1816 (STEAKHOUSE ROAD)	BEGIN MAINTENANCE	SR 1712 (DREXEL ROAD)	0.44
37	SR 1819 (CRESTVIEW STREET)	US 70	SR 1820 (HIGHLINE AVENUE)	0.2

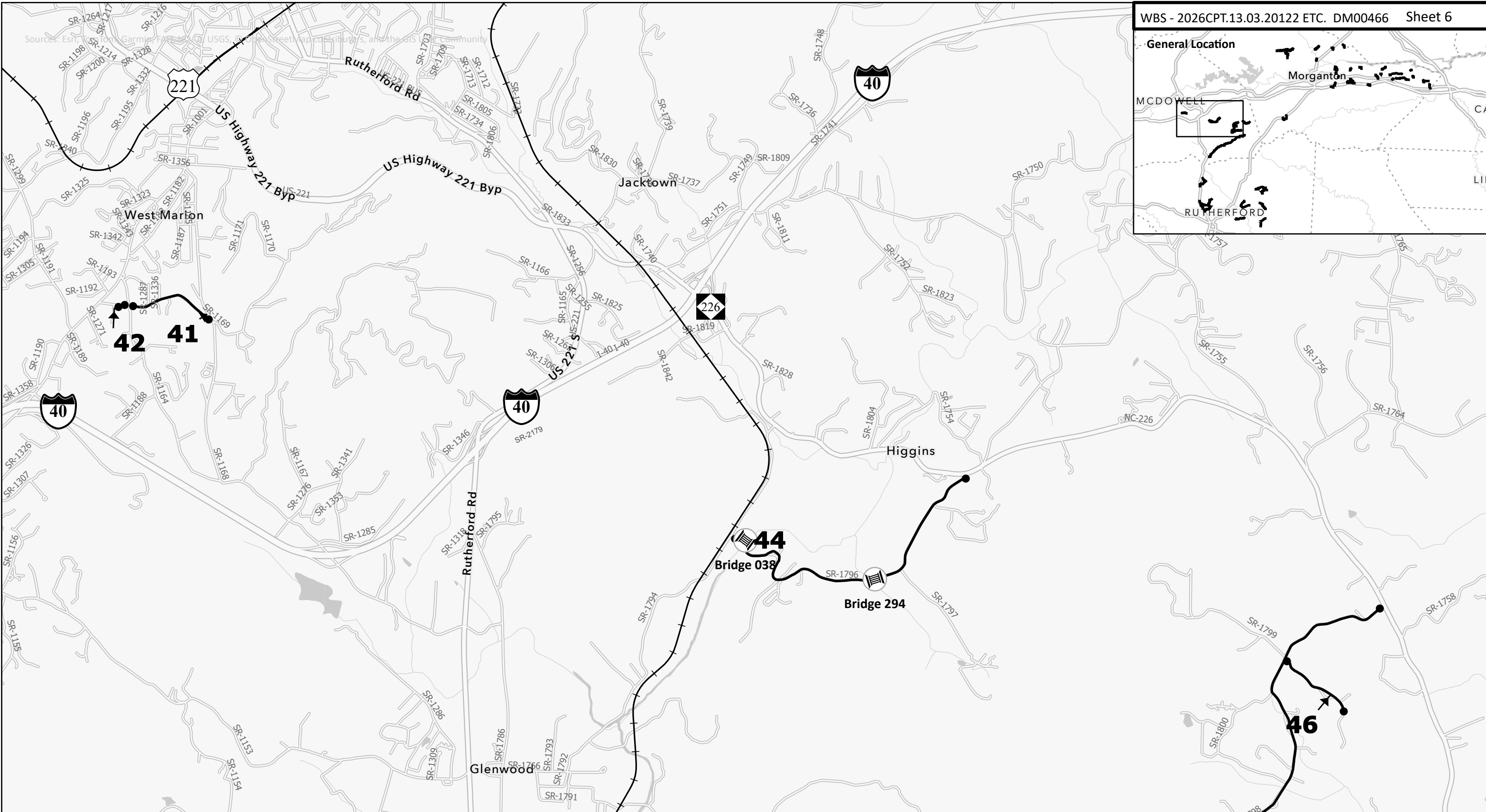
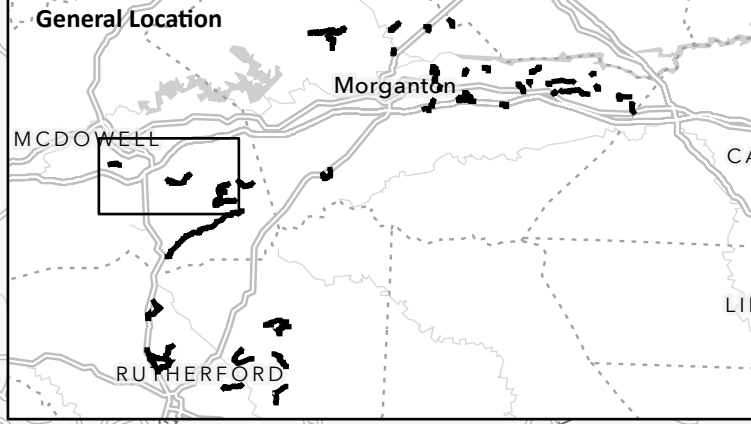


Sources: Esri, TomTom, Garmin, FAO, NOAA, USGS, © OpenStreetMap contributors, and the GIS User Community

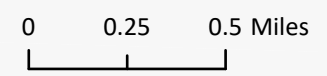


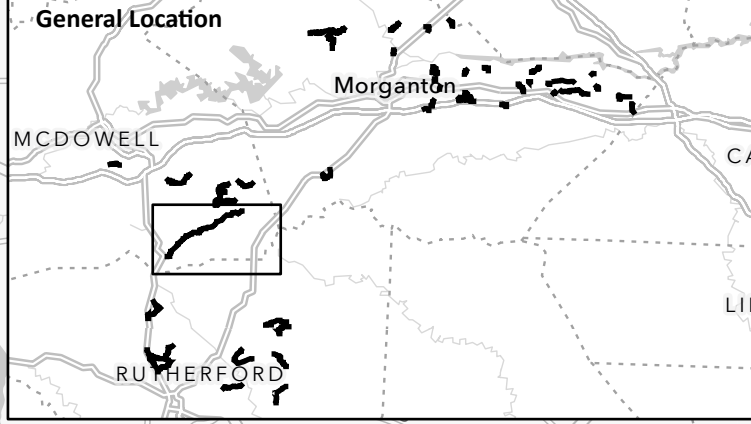
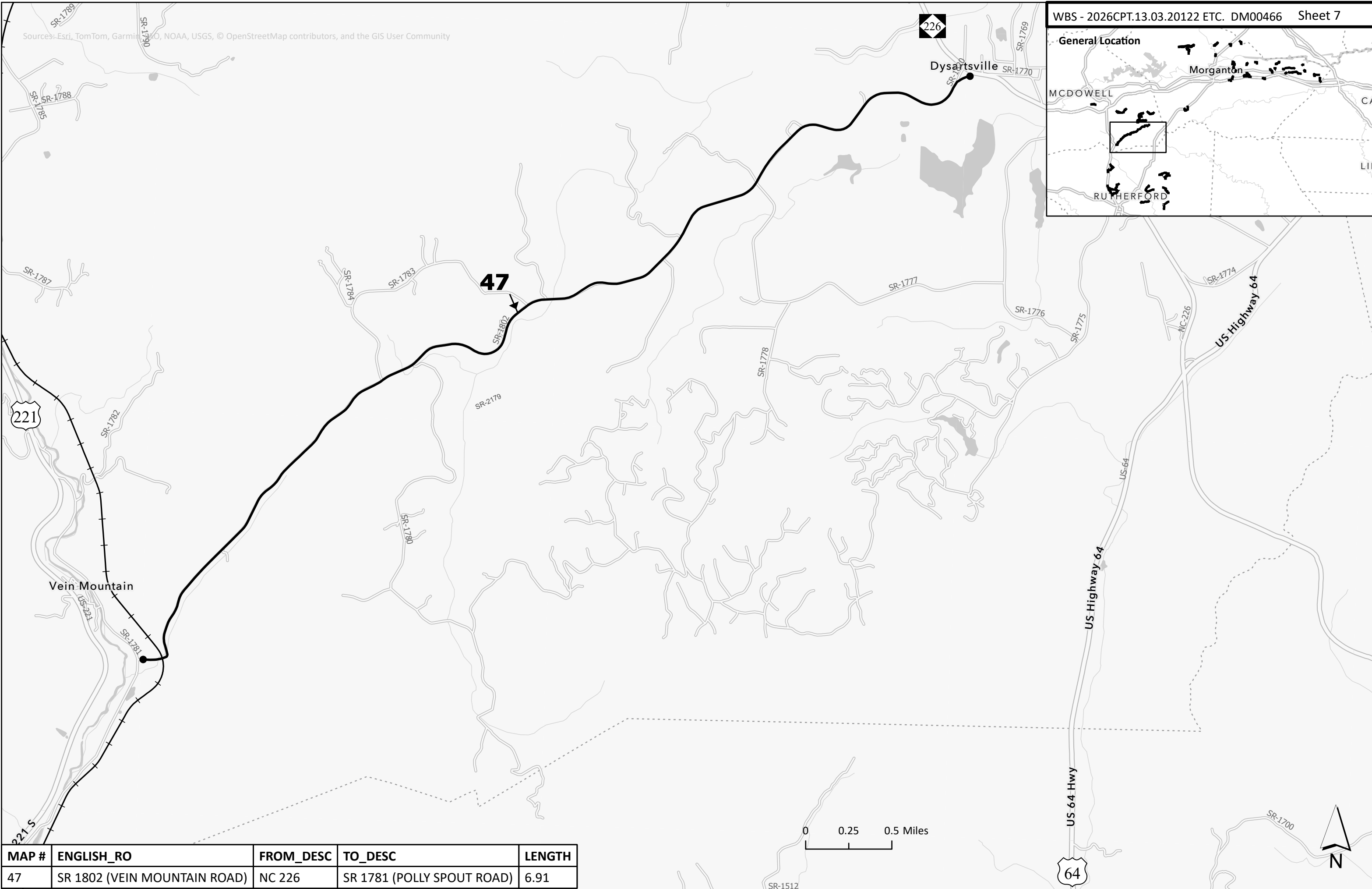
MAP #	ENGLISH_RO	FROM_DESC	TO_DESC	LENGTH
43	SR 1767 (BIGGERSTAFF LOOP)	SHILAH LANE DRIVE (PRIVATE) -.06 MILE PAVEMENT CHANGE	SR 1758 (DRUCILLA CHURCH ROAD)	1.16
38	SR 1968 (BOLLINGER LOOP)	US 64	US 64	1.32

Sources: Esri, Garmin, DeLorme, USGS, OpenStreetMap contributors, and the GIS User Community

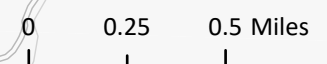


MAP #	ENGLISH_RO	FROM_DESC	TO_DESC	LENGTH
41	SR 1169 (BURMA ROAD WEST)	SR 1168 (ASHWORTH ROAD)	SR 1164 (SHADY LANE)	0.59
42	SR 1169 (STEPPE STREET)	SR 1164 (SHADY LANE)	SR 1011 (SUGAR HILL ROAD)	0.11
44	SR 1796 (MARLOWE ROAD)	NC 226	SR 1794 (OLD GLENWOOD ROAD)	2.12
45	SR 1798 (TATER TOWN LOOP)	NC 226	NC 226	3.84
46	SR 1799 (SOUTH SUNNY GROVE DRIVE)	BEGIN MAINTENANCE	SR 1798 (TATER TOWN LOOP)	0.54

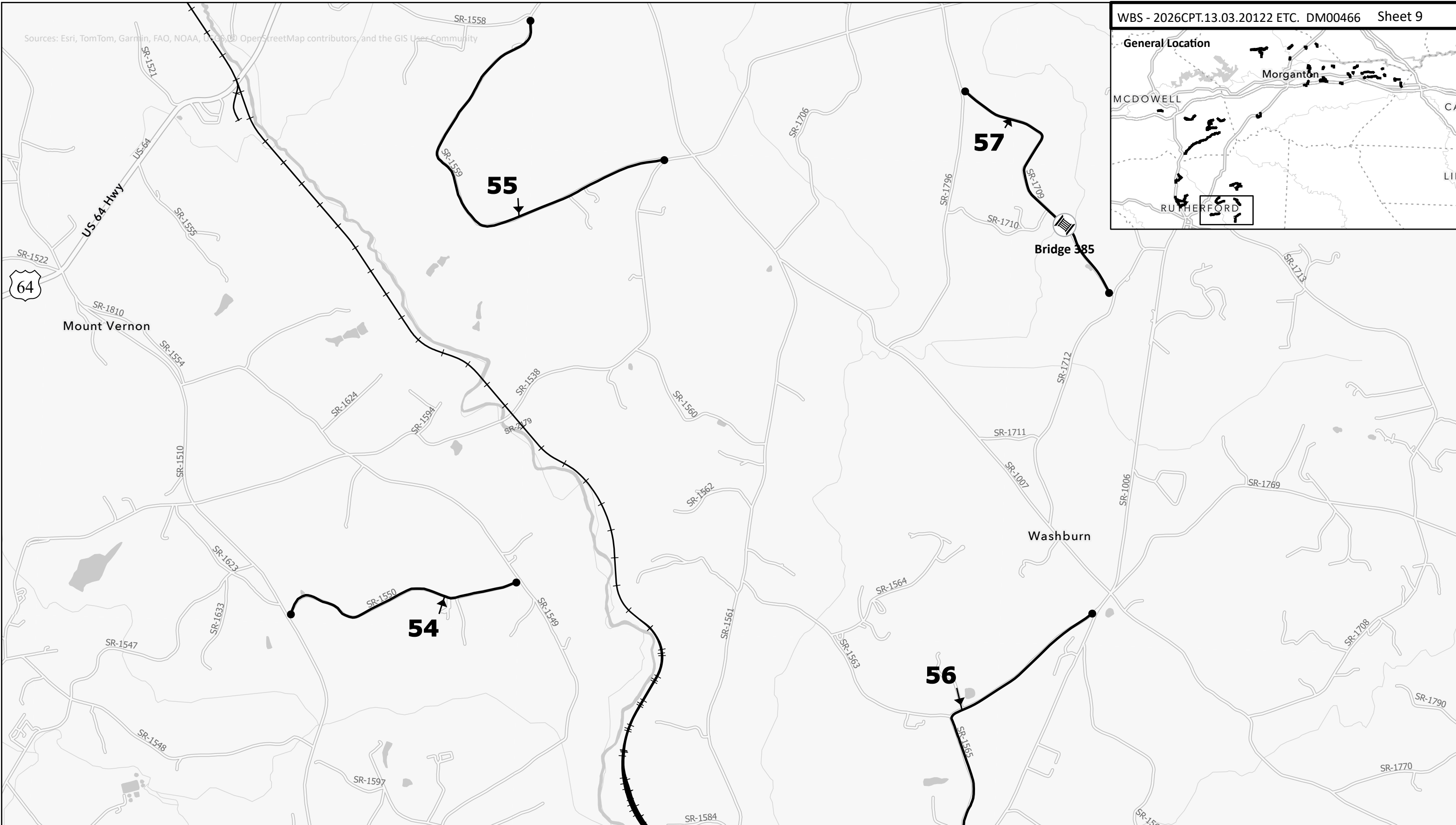
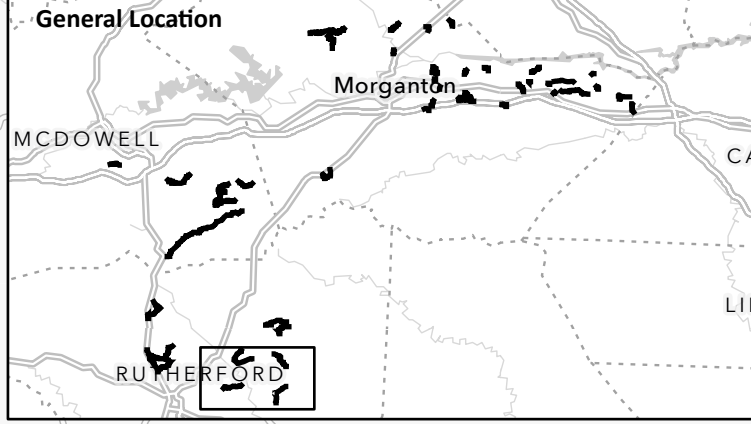




MAP #	ENGLISH_RO	FROM_DESC	TO_DESC	LENGTH
47	SR 1802 (VEIN MOUNTAIN ROAD)	NC 226	SR 1781 (POLLY SPOUT ROAD)	6.91



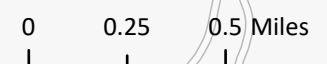
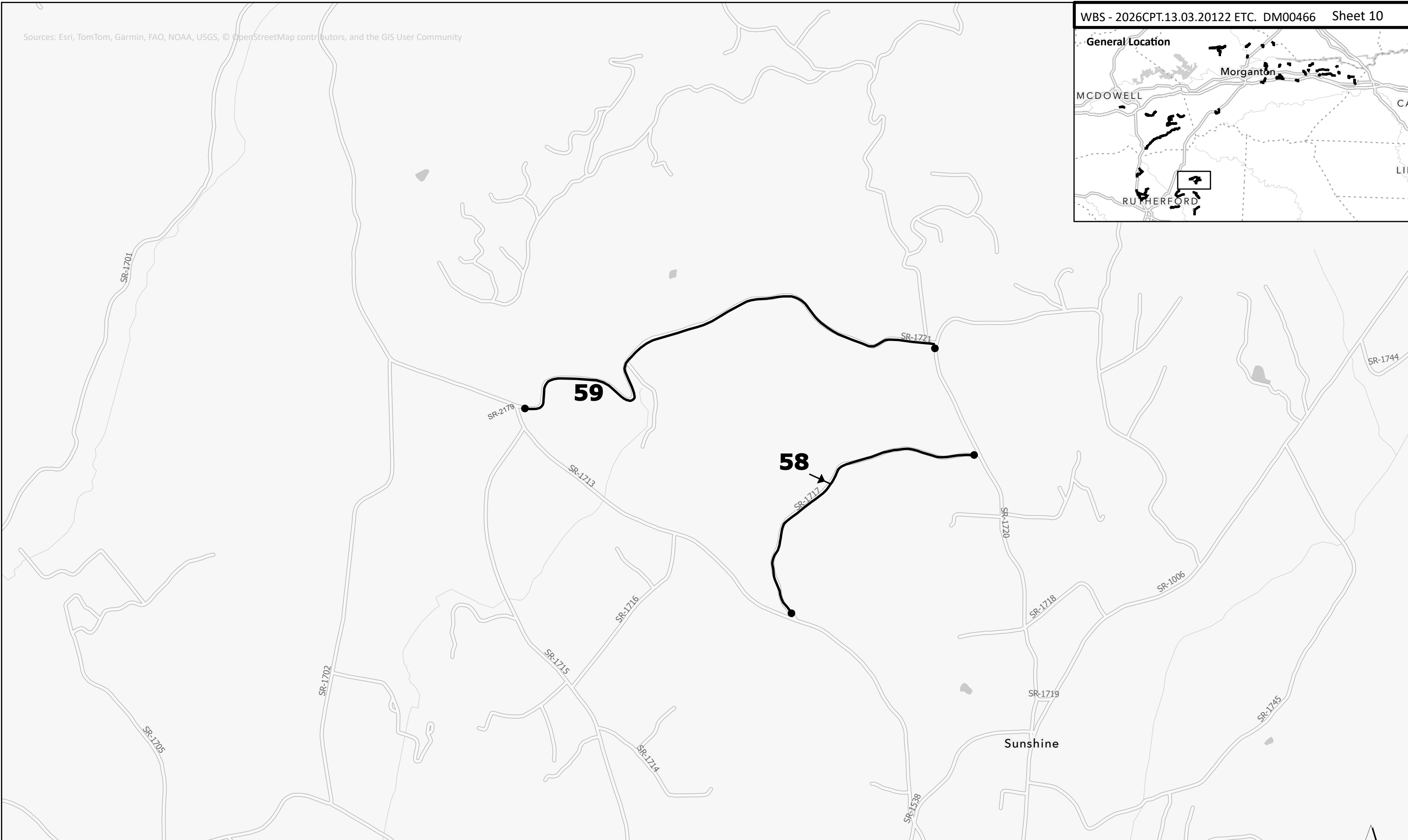
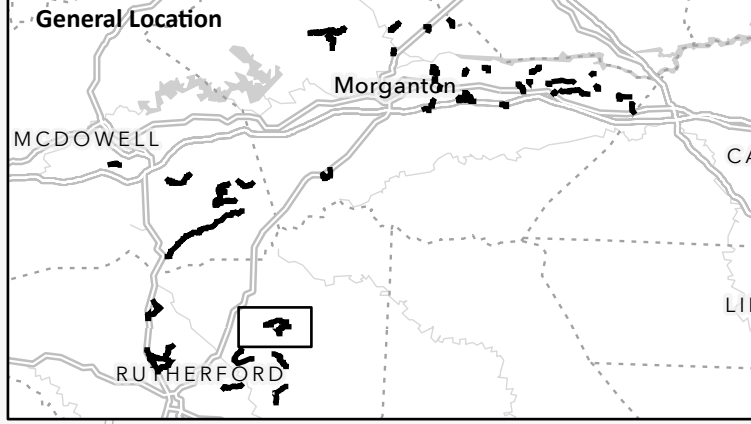
Sources: Esri, TomTom, Garmin, FAO, NOAA, USGS, OpenStreetMap contributors, and the GIS User Community



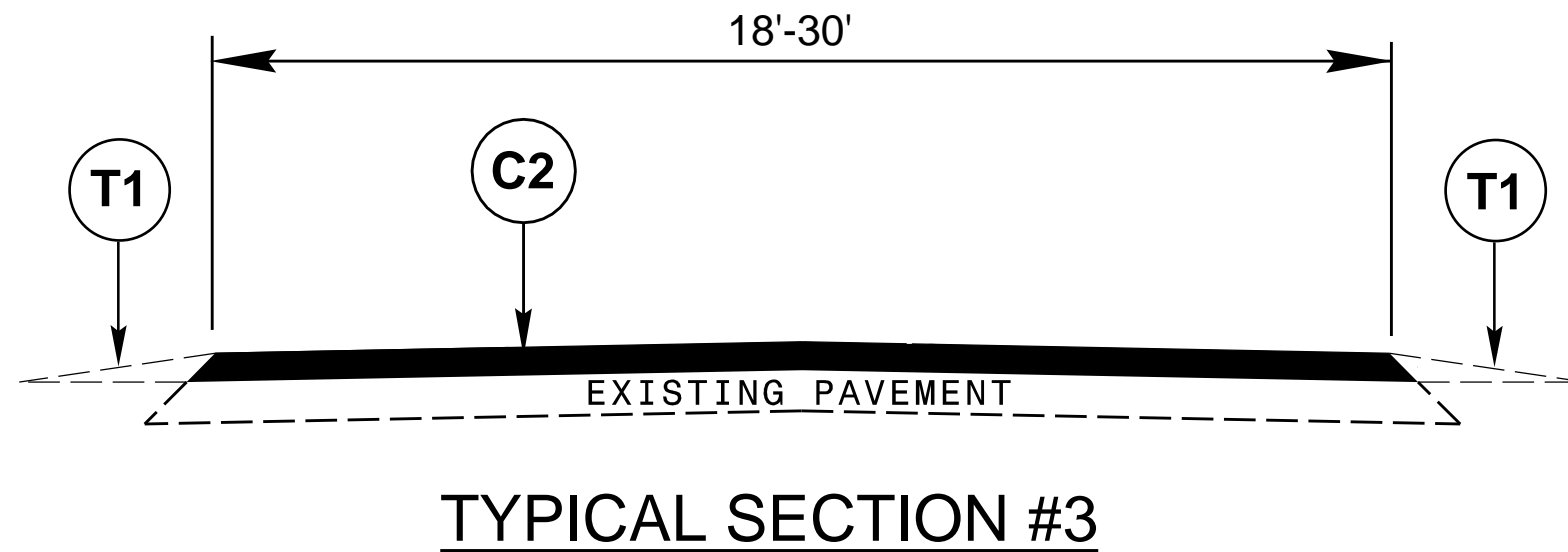
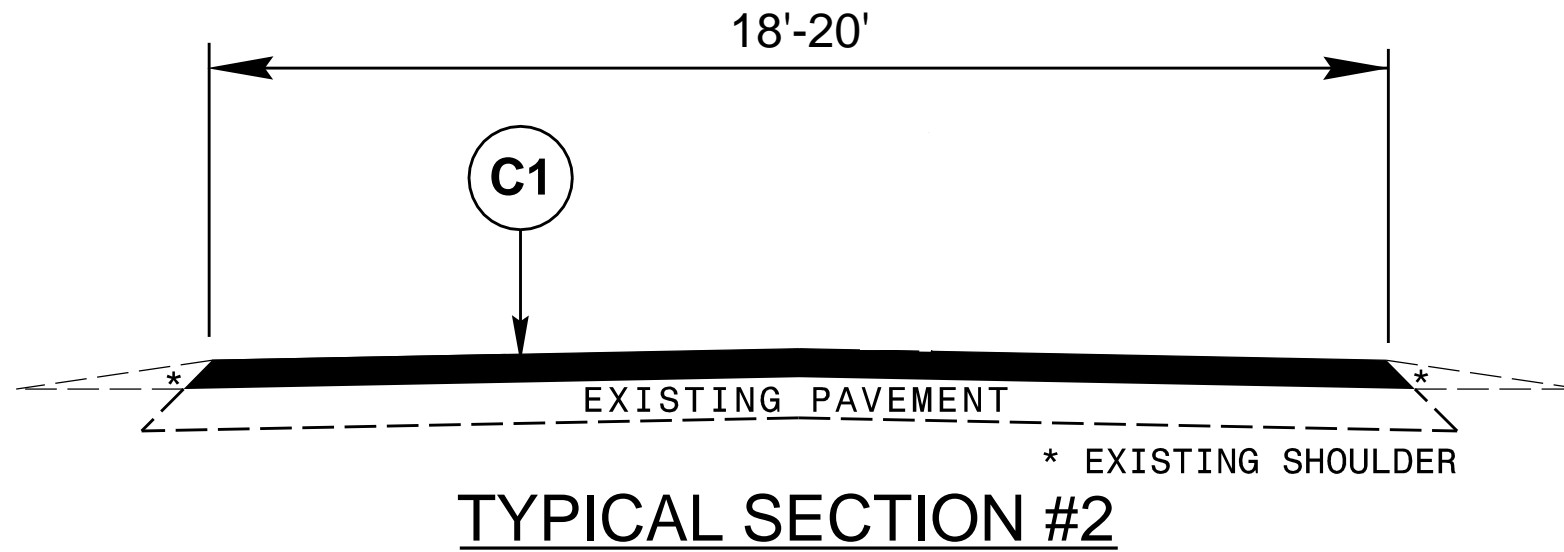
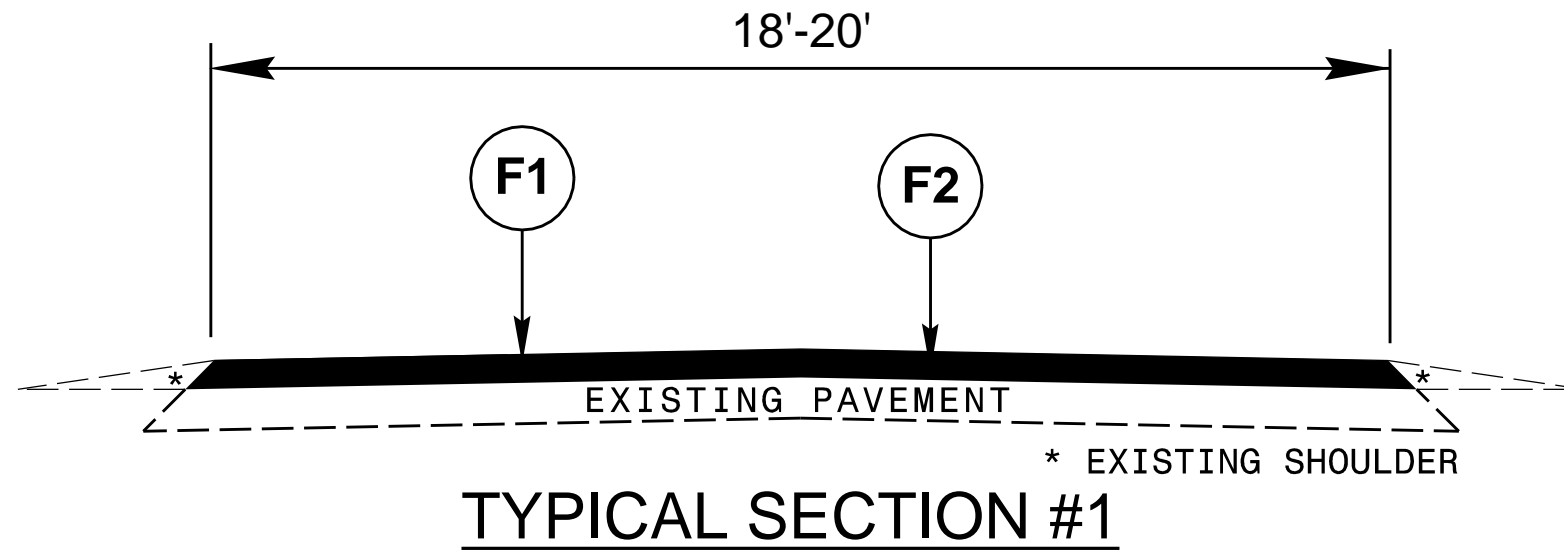
MAP #	ENGLISH_RO	FROM_DESC	TO_DESC	LENGTH
54	SR 1550 (LEE ROAD)	SR 1510 (HUDLOW ROAD)	SR 1549 (ROCK CORNER ROAD)	1.35
55	SR 1559 (FREEMAN ROAD)	SR 1558 (MACKEY FREEMAN ROAD)	SR 1538 (WHITESIDES ROAD)	2.37
56	SR 1565 (GUN CLUB ROAD)	SR 1006 (BOSTIC SUNSHINE HIGHWAY)	SR 1006 (BOSTIC SUNSHINE HIGHWAY)	1.72
57	SR 1709 (WALKER DAIRY ROAD)	SR 1796 (ENGINEER ROAD)	SR 1712 (JOE BOSTIC ROAD)	1.5



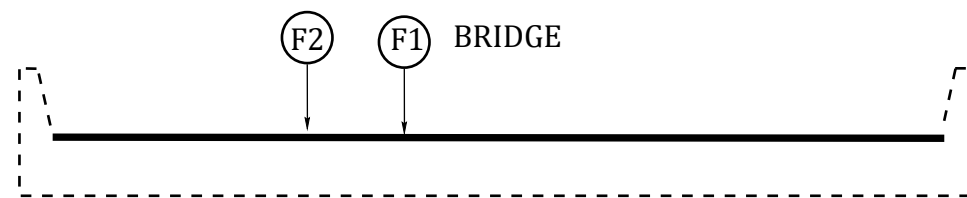
Sources: Esri, TomTom, Garmin, FAO, NOAA, USGS, © OpenStreetMap contributors, and the GIS User Community



MAP #	ENGLISH_RO	FROM_DESC	TO_DESC	LENGTH
58	SR 1717 (LUCKADOO ROAD)	SR 1720 (TONEY ROAD)	SR 1713 (DEPRIEST ROAD)	1.1
59	SR 1721 (WATERS ROAD)	SR 1720 (TONEY ROAD)	SR 1713 (DEPRIEST ROAD)	1.79



PAVEMENT SCHEDULE	
C1	PROP. APPROX. 1" ASPHALT CONCRETE SURFACE COURSE, TYPE S4.74A, AT AN AVGERAGE RATE OF 110 LBS. PER SQ. YARD
C2	PROP. APPROX. 1.25" ASPHALTIC CONCRETE SURFACE COURSE, TYPE S9.5B, AT AN AVERAGE RATE OF 137.5 LBS. PER SQ. YARD
F1	ASPHALT SURFACE TREATMENT, DOUBLE SEAL
F2	ASPHALT SURFACE TREATMENT, FOG SEAL
T1	SHOULDER RECONSTRUCTION

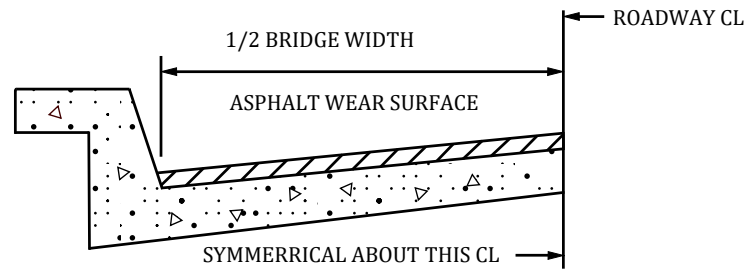


BRIDGE DETAIL

BRIDGE NUMBER 181 MAP 3, 038 MAP 44, 294 MAP 44,
214 MAP 51, 216 MAP 51, 010 MAP 45,
385 MAP 57 AND 180 MAP 20
SEE MAP FOR BRIDGE LOCATION.

PAVEMENT SCHEDULE

C1	PROP. APPROX. 1" ASPHALT CONCRETE SURFACE COURSE, TYPE S4.74A, AT AN AVGERAGE RATE OF 110 LBS. PER SQ. YARD
C2	PROP. APPROX. 1.25" ASPHALTIC CONCRETE SURFACE COURSE, TYPE S9.5B, AT AN AVERAGE RATE OF 137.5 LBS. PER SQ. YARD
F1	ASPHALT SURFACE TREATMENT, DOUBLE SEAL
F2	ASPHALT SURFACE TREATMENT, FOG SEAL
T1	SHOULDER RECONSTRUCTION



BRIDGE HALF TYPICAL SECTION

FOR BRIDGES WITH FLOOR DRAINS, CARE SHALL BE EXERCISED IN PLACING THE WEARING SURFACE AROUND FLOOR DRAINS SO AS NOT TO HINDER EFFECTIVE DRAINAGE. ALL DRAINS SHALL BE LEFT OPEN.

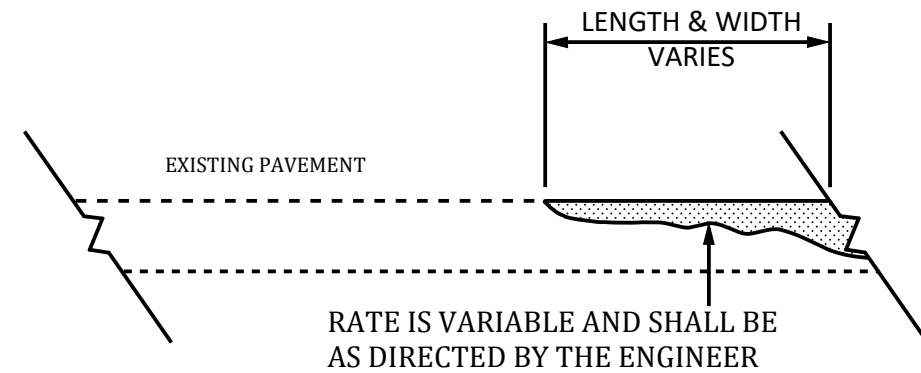
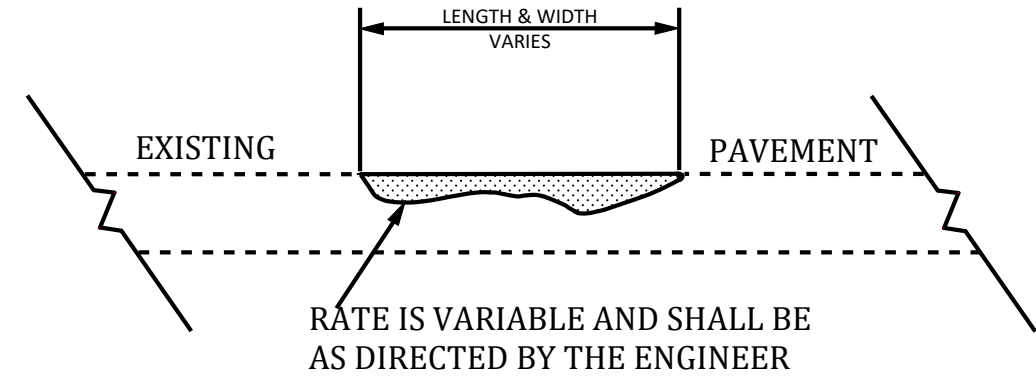
THE PROPOSED WEARING SURFACE SHALL VARY IN THICKNESS AS NECESSARY TO PROVIDE A SMOOTH RIDING SURFACE. THE MINIMUM THICKNESS SHOULD DEPEND ON PAVEMENT TYPE AS FOLLOWS: S4.75A 1/2", S9.5B 1", S9.5C,D 1.5" - 2". ULTRA-THIN HOT MIX ASPHALT "

NOTES

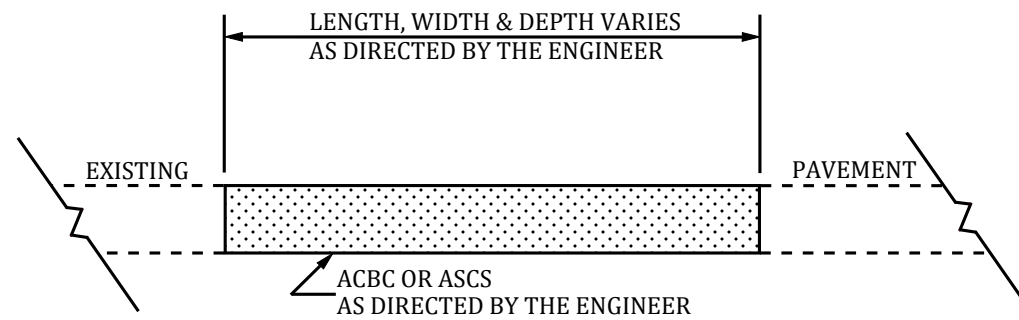
EDGES, PAVEMENT WIDENING, INTERSECTIONS AND BRIDGE FLARES ARE INCLUDED IN THE TABLE OF QUANTITIES.

SHOULDERS AND DITCHES ARE TO BE CONSTRUCTED BY OTHERS UNLESS OTHERWISE INDICATED.

BRIDGES ARE TO BE RESURFACED AT LOCATIONS AND TO DEPTH AS DIRECTED BY THE ENGINEER.

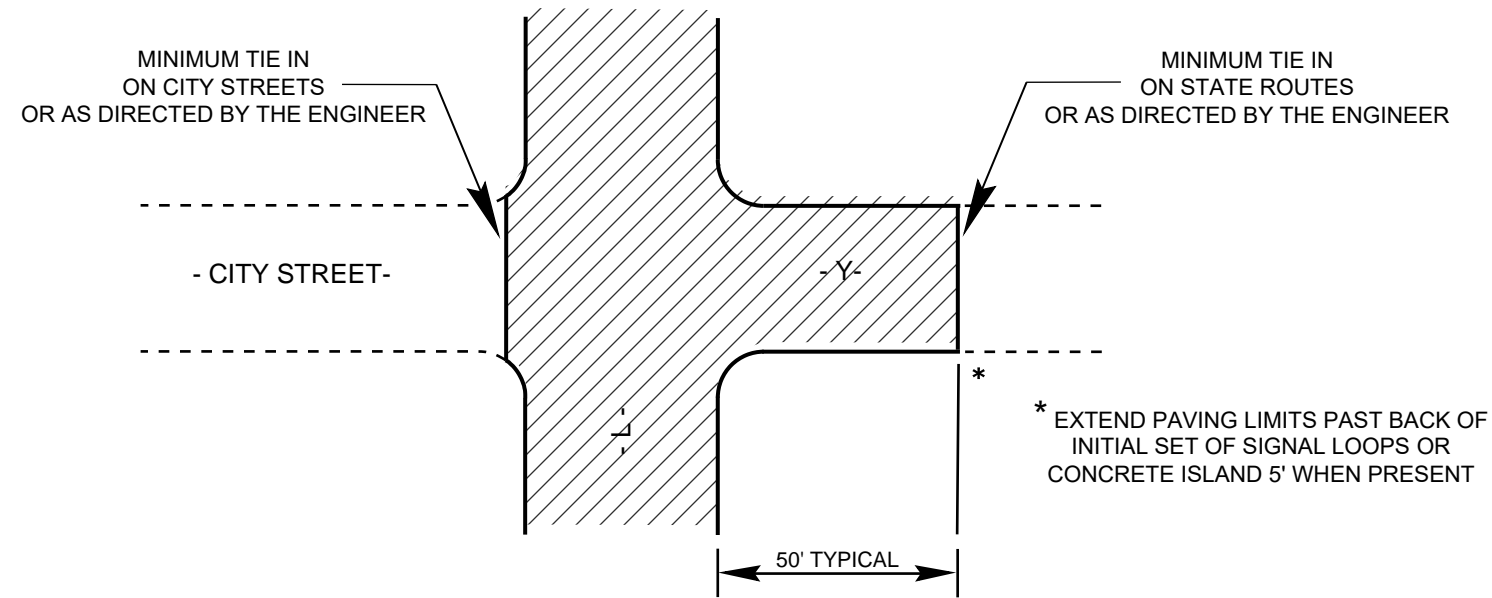


DETAIL SHOWING METHOD OF WEDGING

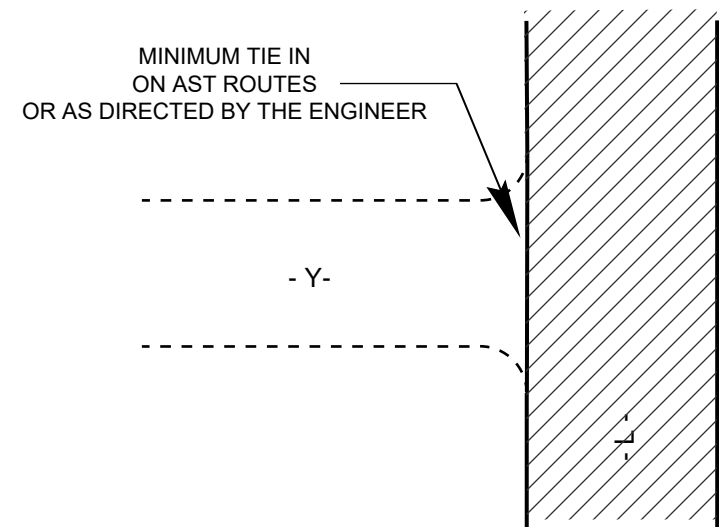


PATCHING EXISTING PAVEMENT

DETAIL 1



DETAIL 2



TYPICAL DETAILS OF PAVING LIMITS AT -Y- LINES

BRIDGE DATA

Map No.	Route No.	Route Name	Bridge No.	Posted SV	Posted TSS	Recommended Treatment, From Bridge Maintenance
3	1439	Henderson Mill Road	110061			Do not pave
44	1796	Marlowe Road	580038			Do not pave
44	1796	Marlowe Road	580294			Do not pave
51	1526	Gilmer Edwards Road	800214			Do not pave
51	1526	Gilmer Edwards Road	800216			Double seal, Fog seal
45	1798	Tater Town Loop	580010			Double seal, Fog seal
57	1709	Walker Dairy Road	800385			Do not pave
20	1619	Bailey road	110180			Do not pave

PROJECT NO.	SHEET NO.
2026CPT.13.03.20122, ETC.	16

SUMMARY OF QUANTITIES

PROJECT NO	COUNTY	MAP NO	ROUTE	DESCRIPTION	TYP NO	LANES	LANE TYPE	LENGTH		WIDTH	BEGIN MP	END MP	1245000000-E	1260000000-E	1519000000-E	1526000000-E	1575000000-E	1704000000-E	1803500000-E	1820000000-E	1838000000-E								
								SHOULDER RECONSTRUCTION	AGGREGATE SHOULDER BORROW				ASPHALT CONC SURFACE COURSE, TYPE S9.5B	ASPHALT CONC SURFACE COURSE, TYPE S4.75A	ASPHALT BINDER FOR PLANT MIX	PATCHING EXISTING PAVEMENT	ASPHALT SURFACE TREATMENT, DOUBLE SEAL	ASPHALT SURFACE TREATMENT, FOG SEAL	EMULSION FOR ASPHALT SURFACE TREATMENT										
								MI	FT												SMI	TON	TON	TON	TON	TON	SY	SY	GAL
2026CPT.13.03.20122	Burke	1	SR 1410 (GOODMAN LAKE ROAD)	FROM SR 1439 (HENDERSON MILL ROAD) TO NC 181	1	2	2WU	1.64	20.00	0.00	1.64						3	68	19,360	19,360	11,616								
2026CPT.13.03.20122	Burke	2	SR 1435 (OLD JOHNS RIVER ROAD)	FROM END OF MAINT TO SR 1426 (PAX HILL ROAD)	1	2	2WU	0.80	18.00	0.00	0.80						2	48	8,448	8,448	5,069								
2026CPT.13.03.20122	Burke	3	SR 1439 (HENDERSON MILL ROAD)	FROM NC 181 TO BRIDGE # 0061 ABUTMENT	1	2	2WU	2.62	20.00	0.01	2.63						4	88	30,741	30,741	18,445								
2026CPT.13.03.20122	Burke	4	SR 1480 (LAKE / DEERFIELD DRIVE)	FROM SR 1410 (GOODMAN LAKE ROAD) TO CUL DE SAC	2	2	2WU	0.24	20.00	0.00	0.24				177		14	28											
2026CPT.13.03.20122	Burke	5	SR 1491 (SOUTH DEERFIELD DRIVE)	FROM SR 1486 (LAKE DRIVE) TO CUL DE SAC	2	2	2WU	0.14	20.00	0.00	0.14				107		8	15											
2026CPT.13.03.20122	Burke	6	SR 1493 (OLD SCHOOL TRAIL)	FROM SR 1423 (PIEDMONT ROAD) TO CUL DE SAC	1	2	2WU	0.33	20.00	0.00	0.33						3	60	4,150	4,150	2,490								
2026CPT.13.03.20122	Burke	7	SR-1518 (DEVINNEY AVENUE)	FROM SR 1519 (DEVINNEY STREET) TO END OF MAINTENANCE	1	2	2WU	0.30	18.00	0.32	0.62						1	16	3,168	3,168	1,901								
2026CPT.13.03.20122	Burke	8	SR 1534 (WILLIAMS ROAD)	FROM SR 1531 (NORTH MAIN STREET) TO END OF MAINTENANCE	2	2	2WU	0.37	18.00	0.01	0.38				225		17	20											
2026CPT.13.03.20122	Burke	9	SR 1547 (GARDIOL AVENUE NORTH EAST)	FROM PAVEMENT JOINT AT BRIGE #148 TO SR 1547 (REFOUR ROAD NORTH EAST)	1	2	2WU	0.27	20.00	0.25	0.52						1	15	3,168	3,168	1,901								
2026CPT.13.03.20122	Burke	10	SR 1547 (REFOUR ROAD NORTH EAST)	FROM SR 1554 (BRAVARD STREET) TO US 70	1	2	2WU	0.49	18.00	0.52	1.01						1	15	5,174	5,174	3,105								
2026CPT.13.03.20122	Burke	11	SR-1556 (MILL / GIDEON STREET)	FROM SR 1001 (MALCOLM BOULEVARD) TO SR 1557 (BENFIELD DRIVE)	1	2	2WU	0.17	19.00	0.01	0.18						1	15	1,895	1,895	1,137								
2026CPT.13.03.20122	Burke	12	SR-1566 (TOM THOMAS DRIVE)	FROM SR 1519 (DEVINNEY STREET) TO END OF MAINTENANCE	1	2	2WU	0.13	18.00	0.00	0.13						1	15	1,408	1,408	845								
2026CPT.13.03.20122	Burke	13	SR 1567 (RACE TRACK STREET)	FROM SR 1501 (ANTIOCH ROAD) TO SR 2219 (RACE TRACK STREET)	1	2	2WU	0.40	18.00	0.00	0.40						1	15	4,224	4,224	2,535								
2026CPT.13.03.20122	Burke	14	SR-1569 (PUTNAM STREET)	FROM NC 18/ US64 TO END OF MAINTENANCE	1	2	2WU	0.48	18.00	0.01	0.49						2	32	5,069	5,069	3,042								
2026CPT.13.03.20122	Burke	15	SR-1578 (OLD AMHERST CIRCLE)	FROM SR 1512 (AMHERST ROAD) TO SR 1512 (AMHERST ROAD)	1	2	2WU	0.23	20.00	0.01	0.24						1	15	2,699	2,699	1,620								
2026CPT.13.03.20122	Burke	16	SR 1591 (EASTBROOK CIRCLE)	FROM PAVEMENT JOINT TO SR 1520 (WALL STREET)	2	2	2WU	0.27	19.00	0.17	0.44				185		14	23											
2026CPT.13.03.20122	Burke	17	SR 1600 (TALMON STREET)	FROM SR 1001 (MALCOLM BOULEVARD) TO END OF MAINTENANCE	1	2	2WU	0.68	19.00	0.01	0.69						1	15	7,580	7,580	4,548								
2026CPT.13.03.20122	Burke	18	SR 1609 (SETZER STREET / KNOB AVENUE)	FROM US 70 TO END OF MAINTENANCE	2	2	2WU	0.18	19.00	0.01	0.19				140		11	15											
2026CPT.13.03.20122	Burke	19	SR 1614 (OAK RIDGE CHURCH ROAD)	FROM SR 1608 (SHADY GROVE ROAD) TO SR 1611 (RHODHISS ROAD)	1	2	2WU	1.34	19.00	0.00	1.34						2	35	14,937	14,937	8,963								
2026CPT.13.03.20122	Burke	20	SR 1619 (BAILEY ROAD)	FROM SR 1618 (ICARD SCHOOL ROAD) TO SR 1621 (ICARD RHODHISS ROAD)	1	2	2WU	1.06	20.00	0.95	2.01						1	11	12,437	12,437	7,463								

PROJECT NO.	SHEET NO.
2026CPT.13.03.20122, ETC.	17

SUMMARY OF QUANTITIES

PROJECT NO	COUNTY	MAP NO	ROUTE	DESCRIPTION	TYP NO	LANES	LANE TYPE	LENGTH		BEGIN MP	END MP	1245000000-E	1260000000-E	1519000000-E	1526000000-E	1575000000-E	1704000000-E	1803500000-E	1820000000-E	1838000000-E
								MI	FT			SHOULDER RECONSTRUCTION	AGGREGATE SHOULDER BORROW	ASPHALT CONC SURFACE COURSE, TYPE S9.5B	ASPHALT CONC SURFACE COURSE, TYPE S4.75A	ASPHALT BINDER FOR PLANT MIX	PATCHING EXISTING PAVEMENT	ASPHALT SURFACE TREATMENT, DOUBLE SEAL	ASPHALT SURFACE TREATMENT, FOG SEAL	EMULSION FOR ASPHALT SURFACE TREATMENT
								SMI	TON			TON	TON	TON	TON	SY	SY	GAL		
2026CPT.13.03.20122	Burke	21	SR 1619 (MCDUFFY ROAD)	FROM SR 1611 (RHODHISS ROAD) TO SR 1618 (ICARD SCHOOL ROAD)	1	2	2WU	0.94	20.00	0.00	0.94					1	11	11,029	11,029	6,618
2026CPT.13.03.20122	Burke	22	SR 1626 (GUS ICARD STREET)	FROM SR 1621 (ICARD RHODHISS ROAD) TO END OF MAINTENANCE	1	2	2WU	0.33	18.00	0.01	0.34					1	22	3,485	3,485	2,091
2026CPT.13.03.20122	Burke	23	SR 1631 (41ST STREET NORTH WEST)	FROM SR 1630 (WILSON ROAD) TO END OF MAINTENANCE	1	2	2WU	0.19	19.00	0.00	0.19					1	15	2,118	2,118	1,271
2026CPT.13.03.20122	Burke	24	SR 1635 (TENTH STREET NORTH EAST)	FROM SR 1630 (WILSON ROAD) TO RAIL ROAD CROSSING	1	2	2WU	0.18	18.00	0.01	0.19					1	15	1,901	1,901	1,141
2026CPT.13.03.20122	Burke	25	SR 1635 (TENTH STREET NORTH EAST)	FROM SR 1007 (70A EAST) TO US 70	1	2	2WU	0.35	18.00	0.21	0.56					2	35	3,696	3,696	2,218
2026CPT.13.03.20122	Burke	26	SR 1667 (BROWN CIRCLE)	FROM SR 1611 (RHODHISS ROAD) TO SR 1611 (RHODHISS ROAD)	1	2	2WU	0.17	19.00	0.02	0.19					1	15	1,895	1,895	1,137
2026CPT.13.03.20122	Burke	27	SR 1683 (INDIAN HILLS AVENUE/INDIAN HILLS STREET)	FROM SR 1647 (CAPE HICKORY ROAD) TO END OF MAINTENANCE	2	2	2WU	0.86	20.00	0.01	0.87			600	44	38				
2026CPT.13.03.20122	Burke	28	SR 1691 (INDIAN HILLS CIRCLE)	FROM SR 1683 (INDIAN HILLS STREET) TO SR 1683 (INDIAN HILLS STREET)	2	2	2WU	0.42	20.00	0.00	0.42			300	22	20				
2026CPT.13.03.20122	Burke	29	SR 1698 (ISLAND CREEK AVENUE)	FROM SR 1607 (ISRAEL CHAPEL ROAD) TO END OF MAINTENANCE	1	2	2WU	0.15	19.00	0.00	0.15					1	15	1,672	1,672	1,004
2026CPT.13.03.20122	Burke	30	SR 1711 (BLANTON ROAD)	FROM SR 1704 (BETHEL ROAD) TO SR 1708 (EAST PARKER ROAD)	1	2	2WU	0.50	20.00	0.01	0.51					1	15	5,867	5,867	3,521
2026CPT.13.03.20122	Burke	31	SR 1720 (RECTOR STREET)	FROM NC 114 TO END OF MAINTENANCE	1	2	2WU	0.21	18.00	0.01	0.22					1	15	2,218	2,218	1,331
2026CPT.13.03.20122	Burke	32	SR 1721 (COOK ROAD)	FROM NC 114 TO SR 1726 (HIGH PEAK ROAD)	1	2	2WU	0.82	19.00	0.01	0.83					2	34	9,140	9,140	5,484
2026CPT.13.03.20122	Burke	33	SR 1726 (HIGH PEAK ROAD)	FROM SR 1843 (MESSER ROAD) TO NC 114	1	2	2WU	1.03	20.00	1.44	2.47					1	22	12,085	12,085	7,251
2026CPT.13.03.20122	Burke	34	SR 1734 (MILLSTONE AVENUE)	FROM SR 1737 (FLAT GAP ROAD) TO .01 MILE PAST I 40 ON RAMP	3	2	2WU	0.22	23.00	1.24	1.46	0.44	57	220		16	35			
2026CPT.13.03.20122	Burke	35	SR 1734 (MILLSTONE AVENUE)	FROM .01 MILE PAST I 40 ON RAMP TO END OF MAINTENANCE	1	2	2WU	0.25	23.00	1.46	1.71					1	17	3,756	3,756	2,253
2026CPT.13.03.20122	Burke	36	SR 1816 (STEAKHOUSE ROAD)	FROM BEGIN MAINTENANCE TO SR 1712 (DREXEL ROAD)	1	2	2WU	0.44	18.00	0.00	0.44					1	15	4,646	4,646	2,788
2026CPT.13.03.20122	Burke	37	SR 1819 (CRESTVIEW STREET)	FROM US 70 TO SR 1820 (HIGHLINE AVENUE)	1	2	2WU	0.20	20.00	0.01	0.21					1	15	2,347	2,347	1,409
2026CPT.13.03.20122	Burke	38	SR 1968 (BOLLINGER LOOP)	FROM US 64 TO US 64	1	2	2WU	1.32	20.00	0.00	1.32					1	21	15,488	15,488	9,293
2026CPT.13.03.20122	Burke	39	SR 2208 (CUBE DRIVE)	FROM SR 1538 (ENON ROAD) TO DEAD END	2	2	2WU	0.49	18.50	0.00	0.49			315	24	49				
2026CPT.13.03.20122	Burke	40	SR 2219 (SWINK/RACE TRACK STREET)	FROM SR 1567 (RACE TRACK STREET) TO COUNTY LINE	1	2	2WU	0.14	18.00	0.00	0.14					1	15	1,478	1,478	887
TOTAL FOR PROJ NO. 2026CPT.13.03.20122								21.35				0.44	57	220	2,049	213	1,003	207,279	207,279	124,377
2026CPT.13.03.20592	McDowell	41	SR 1169 (BURMA ROAD WEST)	FROM SR 1168 (ASHWORTH ROAD) TO SR 1164 (SHADY LANE)	1	2	2WU	0.59	20.00	0.76	1.35					2	40	6,923	6,923	4,154
2026CPT.13.03.20592	McDowell	42	SR 1169 (STEPPE STREET)	FROM SR 1164 (SHADY LANE) TO SR 1169 (POPLAR DRIVE)	1	2	2WU	0.09	19.50	1.35	1.44					2	33	1,258	1,258	755
2026CPT.13.03.20592	McDowell	43	SR 1767 (BIGGERSTAFF LOOP)	FROM SHILAH LANE DRIVE (PRIVATE) -.06 MILE PAVEMENT CHANGE TO SR 1758 (DRUCILLA CHURCH ROAD)	1	2	2WU	1.16	20.00	1.59	2.75					3	68	13,611	13,611	8,167
2026CPT.13.03.20592	McDowell	44	SR 1796 (MARLOWE ROAD)	FROM NC 226 TO SR 1794 (OLD GLENWOOD ROAD)	1	2	2WU	2.12	20.00	0.01	2.13					4	78	24,875	24,875	14,925
2026CPT.13.03.20592	McDowell	45	SR 1798 (TATER TOWN LOOP)	FROM NC 226 TO NC 226	1	2	2WU	3.84	20.00	0.01	3.85					7	156	45,056	45,056	27,034
2026CPT.13.03.20592	McDowell	46	SR 1799 (SOUTH SUNNY GROVE DRIVE)	FROM BEGIN MAINTENANCE TO SR 1798 (TATER TOWN LOOP)	1	2	2WU	0.54	18.50	0.00	0.54					1	16	5,861	5,861	3,517
2026CPT.13.03.20592	McDowell	47	SR 1802 (VEIN MOUNTAIN ROAD)	FROM NC 226 TO SR 1781 (POLLY SPOUT ROAD)	1	2	2WU	6.90	19.50	0.01	6.91					10	210	78,936	78,936	47,362
TOTAL FOR PROJ NO. 2026CPT.13.03.20592								15.24							29	601	176,520	176,520	105,914	

PROJECT NO.	SHEET NO.
2026CPT.13.03.20122, ETC.	18

SUMMARY OF QUANTITIES

PROJECT NO	COUNTY	MAP NO	ROUTE	DESCRIPTION	TYP NO	LANES	LANE TYPE	LENGTH	WIDTH	BEGIN MP	END MP	1245000000-E	1260000000-E	1519000000-E	1526000000-E	1575000000-E	1704000000-E	1803500000-E	1820000000-E	1838000000-E
												SHOULDER RECONSTRUCTION	AGGREGATE SHOULDER BORROW	ASPHALT CONC SURFACE COURSE, TYPE S9.5B	ASPHALT CONC SURFACE COURSE, TYPE S4.75A	ASPHALT BINDER FOR PLANT MIX	PATCHING EXISTING PAVEMENT	ASPHALT SURFACE TREATMENT, DOUBLE SEAL	ASPHALT SURFACE TREATMENT, FOG SEAL	EMULSION FOR ASPHALT SURFACE TREATMENT
												SMI	TON	TON	TON	TON	TON	SY	SY	GAL
2026CPT.13.03.20812	Rutherford	48	SR 1505 (FERGUSON RIDGE/OWENS CHAPEL ROAD)	FROM SR 1501 (CONEY ISLAND ROAD) TO SR 1508 (OLD UNION MILLS ROAD)	1	2	2WU	1.69	18.00	0.01	1.70					1	26	17,846	17,846	10,708
2026CPT.13.03.20812	Rutherford	49	SR 1506 (FERGUSON RIDGE ROAD)	FROM SR 1505 (OWENS CHAPEL ROAD) TO PAVEMENT CHANGE	1	2	2WU	0.08	18.00	0.00	0.08					1	11	845	845	507
2026CPT.13.03.20812	Rutherford	50	SR 1508 (OWENS CHAPEL/OLD UNION MILLS ROAD)	FROM US 221 TO US 221	1	2	2WU	0.39	18.00	0.01	0.40					1	20	4,118	4,118	2,471
2026CPT.13.03.20812	Rutherford	51	SR 1526 (GILMER EDWARDS ROAD)	FROM SR 1527 (OAK SPRINGS ROAD) TO SR 1532 (GILBOA CHURCH ROAD)	1	2	2WU	2.83	18.00	0.00	2.83					3	60	29,885	29,885	17,931
2026CPT.13.03.20812	Rutherford	52	SR 1532 (GILBOA CHURCH ROAD)	FROM US 221 TO PROJECT LIMIT	1	2	2WU	1.99	18.50	0.00	1.99					1	27	21,598	21,598	12,956
2026CPT.13.03.20812	Rutherford	53	SR 1533 (CHILLY BOWL ROAD)	FROM SR 1532 (GILBOA CHURCH ROAD) TO SR 1526 (GILMER EDWARDS ROAD)	1	2	2WU	1.25	18.00	0.00	1.25					2	36	13,200	13,200	7,920
2026CPT.13.03.20812	Rutherford	54	SR 1550 (LEE ROAD)	FROM SR 1510 (HUDLOW ROAD) TO SR 1549 (ROCK CORNER ROAD)	1	2	2WU	1.35	19.50	0.00	1.35					3	56	15,444	15,444	9,267
2026CPT.13.03.20812	Rutherford	55	SR 1559 (FREEMAN ROAD)	FROM SR 1558 (MACKKEY FREEMAN ROAD) TO SR 1538 (WHITESIDES ROAD)	1	2	2WU	2.37	20.00	0.00	2.37					2	43	27,808	27,808	16,685
2026CPT.13.03.20812	Rutherford	56	SR 1565 (GUN CLUB ROAD)	FROM SR 1006 (BOSTIC SUNSHINE HIGHWAY) TO SR 1006 (BOSTIC SUNSHINE HIGHWAY)	1	2	2WU	1.72	20.00	0.04	1.76					3	59	20,181	20,181	12,109
2026CPT.13.03.20812	Rutherford	57	SR 1709 (WALKER DAIRY ROAD)	FROM SR 1796 (ENGINEER ROAD) TO SR 1712 (JOE BOSTIC ROAD)	1	2	2WU	1.50	20.00	0.01	1.51					1	31	17,600	17,600	10,560
2026CPT.13.03.20812	Rutherford	58	SR 1717 (LUCKADOO ROAD)	FROM SR (1720 (TONEY ROAD) TO SR 1713 (DEPRIEST ROAD)	1	2	2WU	1.10	19.00	0.00	1.10					2	38	12,261	12,261	7,357
2026CPT.13.03.20812	Rutherford	59	SR 1721 (WATERS ROAD)	FROM SR 1720 (TONEY ROAD) TO SR 1713 (DEPRIEST ROAD)	1	2	2WU	1.79	20.00	1.67	3.46					1	23	21,003	21,003	12,602
TOTAL FOR PROJ NO. 2026CPT.13.03.20812								18.06								21	430	201,789	201,789	121,073
GRAND TOTAL								54.65				0.44	57	220	2,049	263	2,034	585,588	585,588	351,364

PROJECT NO.	SHEET NO.
2026CPT.13.03.20122, ETC.	19

THERMOPLASTIC AND PAINT QUANTITIES

PROJECT NO	COUNTY	MAP NO	ROUTE	DESCRIPTION	TYP NO	LANES	LANE TYPE	LENGTH	WIDTH	BEGIN MP	END MP	4413000000-E	4457000000-N	4704000000-E	4709000000-E	4720000000-E	4890000000-E	4890000000-E
								MI	FT			SF	LS	LF	LF	EA	LF	LF
								WORK ZONE ADVANCE /GENERAL WARNING SIGNING	TEMPORARY TRAFFIC CONTROL			THERMOPLASTIC PAVEMENT MARKING LINES (16", 90 MILS)	THERMOPLASTIC PAVEMENT MARKING LINES (24", 90 MILS) WHITE STOP BAR	THERMOPLASTIC PAVEMENT MARKING CHARACTER (90 MIL) RXR	HOT SPRAY THERMOPLASTIC PAVEMENT MARKING LINES (4", 60 MILS) (WHITE)	HOT SPRAY THERMOPLASTIC PAVEMENT MARKING LINES (4", 60 MILS) (YELLOW)		
2026CPT.13.03.20122	Burke	1	SR 1410 (GOODMAN LAKE ROAD)	FROM SR 1439 (HENDERSON MILL ROAD) TO NC 181	1	2	2WU	1.64	20.00	0.00	1.64	184					17,424	15,376
2026CPT.13.03.20122	Burke	2	SR 1435 (OLD JOHNS RIVER ROAD)	FROM END OF MAINT TO SR 1426 (PAX HILL ROAD)	1	2	2WU	0.80	18.00	0.00	0.80	90					8,448	8,448
2026CPT.13.03.20122	Burke	3	SR 1439 (HENDERSON MILL ROAD)	FROM NC 181 TO BRIDGE # 0061 ABUTMENT	1	2	2WU	2.62	20.00	0.01	2.63	293					27,667	27,667
2026CPT.13.03.20122	Burke	4	SR 1480 (LAKE / DEERFIELD DRIVE)	FROM SR 1410 (GOODMAN LAKE ROAD) TO CUL DE SAC	2	2	2WU	0.24	20.00	0.00	0.24	27						
2026CPT.13.03.20122	Burke	5	SR 1491 (SOUTH DEERFIELD DRIVE)	FROM SR 1486 (LAKE DRIVE) TO CUL DE SAC	2	2	2WU	0.14	20.00	0.00	0.14	16						
2026CPT.13.03.20122	Burke	6	SR 1493 (OLD SCHOOL TRAIL)	FROM SR 1423 (PIEDMONT ROAD) TO CUL DE SAC	1	2	2WU	0.33	20.00	0.00	0.33	37						
2026CPT.13.03.20122	Burke	7	SR-1518 (DEVINNEY AVENUE)	FROM SR 1519 (DEVINNEY STREET) TO END OF MAINTENANCE	1	2	2WU	0.30	18.00	0.32	0.62	34						
2026CPT.13.03.20122	Burke	8	SR 1534 (WILLIAMS ROAD)	FROM SR 1531 (NORTH MAIN STREET) TO END OF MAINTENANCE	2	2	2WU	0.37	18.00	0.01	0.38	42						
2026CPT.13.03.20122	Burke	9	SR 1547 (GARDIOL AVENUE NORTH EAST)	FROM PAVEMENT JOINT AT BRIGE #148 TO SR 1547 (REFOUR ROAD NORTH EAST)	1	2	2WU	0.27	20.00	0.25	0.52	30					2,851	2,851
2026CPT.13.03.20122	Burke	10	SR 1547 (REFOUR ROAD NORTH EAST)	FROM SR 1554 (BRAVARD STREET) TO US 70	1	2	2WU	0.49	18.00	0.52	1.01	55					5,175	5,175
2026CPT.13.03.20122	Burke	11	SR-1556 (MILL / GIDEON STREET)	FROM SR 1001 (MALCOLM BOULEVARD) TO SR 1557 (BENFIELD DRIVE)	1	2	2WU	0.17	19.00	0.01	0.18	20						
2026CPT.13.03.20122	Burke	12	SR-1566 (TOM THOMAS DRIVE)	FROM SR 1519 (DEVINNEY STREET) TO END OF MAINTENANCE	1	2	2WU	0.13	18.00	0.00	0.13	15						
2026CPT.13.03.20122	Burke	13	SR 1567 (RACE TRACK STREET)	FROM SR 1501 (ANTIOCH ROAD) TO SR 2219 (RACE TRACK STREET)	1	2	2WU	0.40	18.00	0.00	0.40	45						
2026CPT.13.03.20122	Burke	14	SR-1569 (PUTNAM STREET)	FROM NC 18/ US64 TO END OF MAINTENANCE	1	2	2WU	0.48	18.00	0.01	0.49	54						
2026CPT.13.03.20122	Burke	15	SR-1578 (OLD AMHERST CIRCLE)	FROM SR 1512 (AMHERST ROAD) TO SR 1512 (AMHERST ROAD)	1	2	2WU	0.23	20.00	0.01	0.24	26						
2026CPT.13.03.20122	Burke	16	SR 1591 (EASTBROOK CIRCLE)	FROM PAVEMENT JOINT TO SR 1520 (WALL STREET)	2	2	2WU	0.27	19.00	0.17	0.44	31						
2026CPT.13.03.20122	Burke	17	SR 1600 (TALMON STREET)	FROM SR 1001 (MALCOLM BOULEVARD) TO END OF MAINTENANCE	1	2	2WU	0.68	19.00	0.01	0.69	77						
2026CPT.13.03.20122	Burke	18	SR 1609 (SETZER STREET / KNOB AVENUE)	FROM US 70 TO END OF MAINTENANCE	2	2	2WU	0.18	19.00	0.01	0.19	24						
2026CPT.13.03.20122	Burke	19	SR 1614 (OAK RIDGE CHURCH ROAD)	FROM SR 1608 (SHADY GROVE ROAD) TO SR 1611 (RHODHISS ROAD)	1	2	2WU	1.34	19.00	0.00	1.34	150					14,150	14,150
2026CPT.13.03.20122	Burke	20	SR 1619 (BAILEY ROAD)	FROM SR 1618 (ICARD SCHOOL ROAD) TO SR 1621 (ICARD RHODHISS ROAD)	1	2	2WU	1.06	20.00	0.95	2.01	119					11,194	11,194

PROJECT NO.	SHEET NO.
2026CPT.13.03.20122, ETC.	20

THERMOPLASTIC AND PAINT QUANTITIES

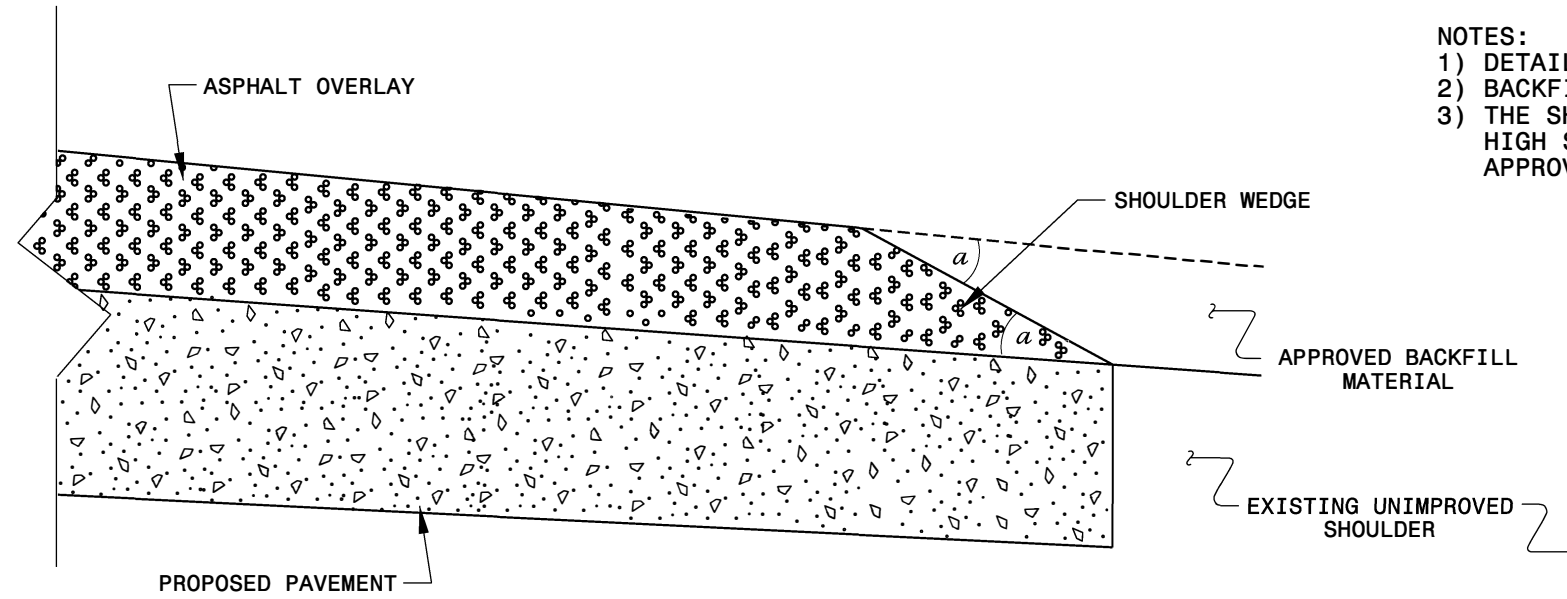
PROJECT NO	COUNTY	MAP NO	ROUTE	DESCRIPTION	TYP NO	LANES	LANE TYPE	LENGTH	WIDTH	BEGIN MP	END MP	4413000000-E	4457000000-N	4704000000-E	4709000000-E	4720000000-E	4890000000-E	4890000000-E	
								MI	FT			WORK ZONE ADVANCE /GENERAL WARNING SIGNING	TEMPORARY TRAFFIC CONTROL	THERMOPLASTIC PAVEMENT MARKING LINES (16", 90 MILS)	THERMOPLASTIC PAVEMENT MARKING LINES (24", 90 MILS) WHITE STOP BAR	THERMOPLASTIC PAVEMENT MARKING CHARACTER (90 MIL) RXR	HOT SPRAY THERMOPLASTIC PAVEMENT MARKING LINES (4", 60 MILS) (WHITE)	HOT SPRAY THERMOPLASTIC PAVEMENT MARKING LINES (4", 60 MILS) (YELLOW)	
												SF	LS	LF	LF	EA	LF	LF	
2026CPT.13.03.20122	Burke	21	SR 1619 (MCDUFFY ROAD)	FROM SR 1611 (RHODHISS ROAD) TO SR 1618 (ICARD SCHOOL ROAD)	1	2	2WU	0.94	20.00	0.00	0.94	106					9,926	9,926	
2026CPT.13.03.20122	Burke	22	SR 1626 (GUS ICARD STREET)	FROM SR 1621 (ICARD RHODHISS ROAD) TO END OF MAINTENANCE	1	2	2WU	0.33	18.00	0.01	0.34	33							
2026CPT.13.03.20122	Burke	23	SR 1631 (41ST STREET NORTH WEST)	FROM SR 1630 (WILSON ROAD) TO END OF MAINTENANCE	1	2	2WU	0.19	19.00	0.00	0.19	22							
2026CPT.13.03.20122	Burke	24	SR 1635 (TENTH STREET NORTH EAST)	FROM SR 1630 (WILSON ROAD) TO RAIL ROAD CROSSING	1	2	2WU	0.18	18.00	0.01	0.19	21			36	30	2	1,901	1,901
2026CPT.13.03.20122	Burke	25	SR 1635 (TENTH STREET NORTH EAST)	FROM SR 1007 (70A EAST) TO US 70	1	2	2WU	0.35	18.00	0.21	0.56	40					3,696	3,696	
2026CPT.13.03.20122	Burke	26	SR 1667 (BROWN CIRCLE)	FROM SR 1611 (RHODHISS ROAD) TO SR 1611 (RHODHISS ROAD)	1	2	2WU	0.17	19.00	0.02	0.19	20							
2026CPT.13.03.20122	Burke	27	SR 1683 (INDIAN HILLS AVENUE/INDIAN HILLS STREET)	FROM SR 1647 (CAPE HICKORY ROAD) TO END OF MAINTENANCE	2	2	2WU	0.86	20.00	0.01	0.87	97					9,082	9,082	
2026CPT.13.03.20122	Burke	28	SR 1691 (INDIAN HILLS CIRCLE)	FROM SR 1683 (INDIAN HILLS STREET) TO SR 1683 (INDIAN HILLS STREET)	2	2	2WU	0.42	20.00	0.00	0.42	48							
2026CPT.13.03.20122	Burke	29	SR 1698 (ISLAND CREEK AVENUE)	FROM SR 1607 (ISRAEL CHAPEL ROAD) TO END OF MAINTENANCE	1	2	2WU	0.15	19.00	0.00	0.15	17							
2026CPT.13.03.20122	Burke	30	SR 1711 (BLANTON ROAD)	FROM SR 1704 (BETHEL ROAD) TO SR 1708 (EAST PARKER ROAD)	1	2	2WU	0.50	20.00	0.01	0.51	56					5,280	5,280	
2026CPT.13.03.20122	Burke	31	SR 1720 (RECTOR STREET)	FROM NC 114 TO END OF MAINTENANCE	1	2	2WU	0.21	18.00	0.01	0.22	24							
2026CPT.13.03.20122	Burke	32	SR 1721 (COOK ROAD)	FROM NC 114 TO SR 1726 (HIGH PEAK ROAD)	1	2	2WU	0.82	19.00	0.01	0.83	97					8,660	8,660	
2026CPT.13.03.20122	Burke	33	SR 1726 (HIGH PEAK ROAD)	FROM SR 1843 (MESSER ROAD) TO NC 114	1	2	2WU	1.03	20.00	1.44	2.47	116					10,877	10,877	
2026CPT.13.03.20122	Burke	34	SR 1734 (MILLSTONE AVENUE)	FROM SR 1737 (FLAT GAP ROAD) TO .01 MILE PAST I 40 ON RAMP	3	2	2WU	0.22	23.00	1.24	1.46	25					2,323	2,323	
2026CPT.13.03.20122	Burke	35	SR 1734 (MILLSTONE AVENUE)	FROM .01 MILE PAST I 40 ON RAMP TO END OF MAINTENANCE	1	2	2WU	0.25	23.00	1.46	1.71	30					2,640	2,640	
2026CPT.13.03.20122	Burke	36	SR 1816 (STEAKHOUSE ROAD)	FROM BEGIN MAINTENANCE TO SR 1712 (DREXEL ROAD)	1	2	2WU	0.44	18.00	0.00	0.44	50							
2026CPT.13.03.20122	Burke	37	SR 1819 (CRESTVIEW STREET)	FROM US 70 TO SR 1820 (HIGHLINE AVENUE)	1	2	2WU	0.20	20.00	0.01	0.21	23							
2026CPT.13.03.20122	Burke	38	SR 1968 (BOLLINGER LOOP)	FROM US 64 TO US 64	1	2	2WU	1.32	20.00	0.00	1.32	148					13,940	13,940	
2026CPT.13.03.20122	Burke	39	SR 2208 (CUBE DRIVE)	FROM SR 1538 (ENON ROAD) TO DEAD END	2	2	2WU	0.49	18.50	0.00	0.49	55							
2026CPT.13.03.20122	Burke	40	SR 2219 (SWINK/RACE TRACK STREET)	FROM SR 1567 (RACE TRACK STREET) TO COUNTY LINE	1	2	2WU	0.14	18.00	0.00	0.14	16							
TOTAL FOR PROJ NO. 2026CPT.13.03.20122								21.35				2,413	*	36	30	2	155,234	153,186	
2026CPT.13.03.20592	McDowell	41	SR 1169 (BURMA ROAD WEST)	FROM SR 1168 (ASHWORTH ROAD) TO SR 1164 (SHADY LANE)	1	2	2WU	0.59	20.00	0.76	1.35	66					6,230	6,230	
2026CPT.13.03.20592	McDowell	42	SR 1169 (STEPPE STREET)	FROM SR 1164 (SHADY LANE) TO SR 1169 (POPLAR DRIVE)	1	2	2WU	0.09	19.50	1.35	1.44	13					1,162	1,162	
2026CPT.13.03.20592	McDowell	43	SR 1767 (BIGGERSTAFF LOOP)	FROM SHILAH LANE DRIVE (PRIVATE) -.06 MILE PAVEMENT CHANGE TO SR 1758 (DRUCILLA CHURCH ROAD)	1	2	2WU	1.16	20.00	1.59	2.75	130					12,250	12,250	
2026CPT.13.03.20592	McDowell	44	SR 1796 (MARLOWE ROAD)	FROM NC 226 TO SR 1794 (OLD GLENWOOD ROAD)	1	2	2WU	2.12	20.00	0.01	2.13	238					22,388	22,388	
2026CPT.13.03.20592	McDowell	45	SR 1798 (TATER TOWN LOOP)	FROM NC 226 TO NC 226	1	2	2WU	3.84	20.00	0.01	3.85	431					40,551	40,551	
2026CPT.13.03.20592	McDowell	46	SR 1799 (SOUTH SUNNY GROVE DRIVE)	FROM BEGIN MAINTENANCE TO SR 1798 (TATER TOWN LOOP)	1	2	2WU	0.54	18.50	0.00	0.54	61							
2026CPT.13.03.20592	McDowell	47	SR 1802 (VEIN MOUNTAIN ROAD)	FROM NC 226 TO SR 1781 (POLLY SPOUT ROAD)	1	2	2WU	6.90	19.50	0.01	6.91	772			22		36,432	36,432	
TOTAL FOR PROJ NO. 2026CPT.13.03.20592								15.24				1,711	*		22		119,013	119,013	

PROJECT NO.	SHEET NO.
2026CPT.13.03.20122, ETC.	21

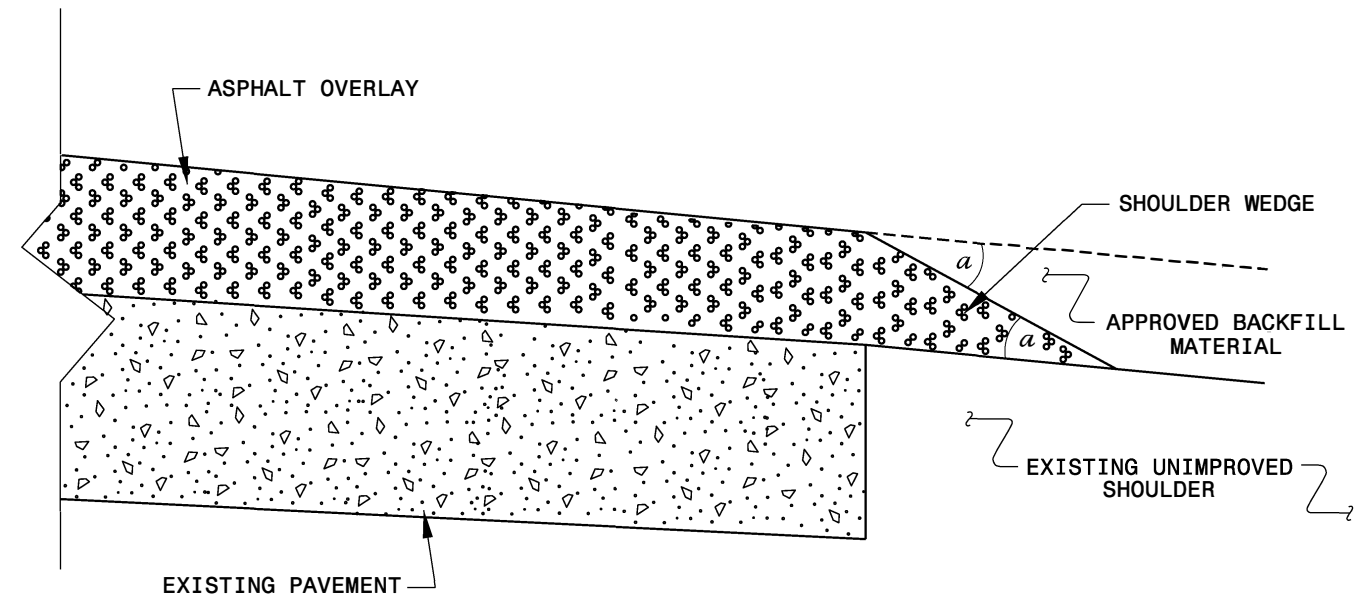
THERMOPLASTIC AND PAINT QUANTITIES

PROJECT NO	COUNTY	MAP NO	ROUTE	DESCRIPTION	TYP NO	LANES	LANE TYPE	LENGTH		BEGIN MP	END MP	4413000000-E	4457000000-N	4704000000-E	4709000000-E	4720000000-E	4890000000-E	4890000000-E
								MI	FT			WORK ZONE ADVANCE /GENERAL WARNING SIGNING	TEMPORARY TRAFFIC CONTROL	THERMOPLASTIC PAVEMENT MARKING LINES (16", 90 MILS)	THERMOPLASTIC PAVEMENT MARKING LINES (24", 90 MILS) WHITE STOP BAR	THERMOPLASTIC PAVEMENT MARKING CHARACTER (90 MIL) RXR	HOT SPRAY THERMOPLASTIC PAVEMENT MARKING LINES (4", 60 MILS) (WHITE)	HOT SPRAY THERMOPLASTIC PAVEMENT MARKING LINES (4", 60 MILS) (YELLOW)
												SF	LS	LF	LF	EA	LF	LF
2026CPT.13.03.20812	Rutherford	48	SR 1505 (FERGUSON RIDGE/OWENS CHAPEL ROAD)	FROM SR 1501 (CONEY ISLAND ROAD) TO SR 1508 (OLD UNION MILLS ROAD)	1	2	2WU	1.69	18.00	0.01	1.70	190					17,846	17,846
2026CPT.13.03.20812	Rutherford	49	SR 1506 (FERGUSON RIDGE ROAD)	FROM SR 1505 (OWENS CHAPEL ROAD) TO PAVEMENT CHANGE	1	2	2WU	0.08	18.00	0.00	0.08	9						
2026CPT.13.03.20812	Rutherford	50	SR 1508 (OWENS CHAPEL/OLD UNION MILLS ROAD)	FROM US 221 TO US 221	1	2	2WU	0.39	18.00	0.01	0.40	44					4,119	4,119
2026CPT.13.03.20812	Rutherford	51	SR 1526 (GILMER EDWARDS ROAD)	FROM SR 1527 (OAK SPRINGS ROAD) TO SR 1532 (GILBOA CHURCH ROAD)	1	2	2WU	2.83	18.00	0.00	2.83	317					29,885	29,885
2026CPT.13.03.20812	Rutherford	52	SR 1532 (GILBOA CHURCH ROAD)	FROM US 221 TO PROJECT LIMIT	1	2	2WU	1.99	18.50	0.00	1.99	223					21,015	21,015
2026CPT.13.03.20812	Rutherford	53	SR 1533 (CHILLY BOWL ROAD)	FROM SR 1532 (GILBOA CHURCH ROAD) TO SR 1526 (GILMER EDWARDS ROAD)	1	2	2WU	1.25	18.00	0.00	1.25	140					13,200	13,200
2026CPT.13.03.20812	Rutherford	54	SR 1550 (LEE ROAD)	FROM SR 1510 (HUDLOW ROAD) TO SR 1549 (ROCK CORNER ROAD)	1	2	2WU	1.35	19.50	0.00	1.35	152					14,256	14,256
2026CPT.13.03.20812	Rutherford	55	SR 1559 (FREEMAN ROAD)	FROM SR 1558 (MACKEY FREEMAN ROAD) TO SR 1538 (WHITESIDES ROAD)	1	2	2WU	2.37	20.00	0.00	2.37	266					25,028	25,028
2026CPT.13.03.20812	Rutherford	56	SR 1565 (GUN CLUB ROAD)	FROM SR 1006 (BOSTIC SUNSHINE HIGHWAY) TO SR 1006 (BOSTIC SUNSHINE HIGHWAY)	1	2	2WU	1.72	20.00	0.04	1.76	193					18,164	18,164
2026CPT.13.03.20812	Rutherford	57	SR 1709 (WALKER DAIRY ROAD)	FROM SR 1796 (ENGINEER ROAD) TO SR 1712 (JOE BOSTIC ROAD)	1	2	2WU	1.50	20.00	0.01	1.51	168					15,840	15,840
2026CPT.13.03.20812	Rutherford	58	SR 1717 (LUCKADOO ROAD)	FROM SR (1720 (TONEY ROAD) TO SR 1713 (DEPRIEST ROAD)	1	2	2WU	1.10	19.00	0.00	1.10	124					11,616	11,616
2026CPT.13.03.20812	Rutherford	59	SR 1721 (WATERS ROAD)	FROM SR 1720 (TONEY ROAD) TO SR 1713 (DEPRIEST ROAD)	1	2	2WU	1.79	20.00	1.67	3.46	201					18,903	18,903
TOTAL FOR PROJ NO. 2026CPT.13.03.20812								18.06				2,027	*				189,872	189,872
GRAND TOTAL								54.65				6,151	1	36	52	2	464,119	462,071

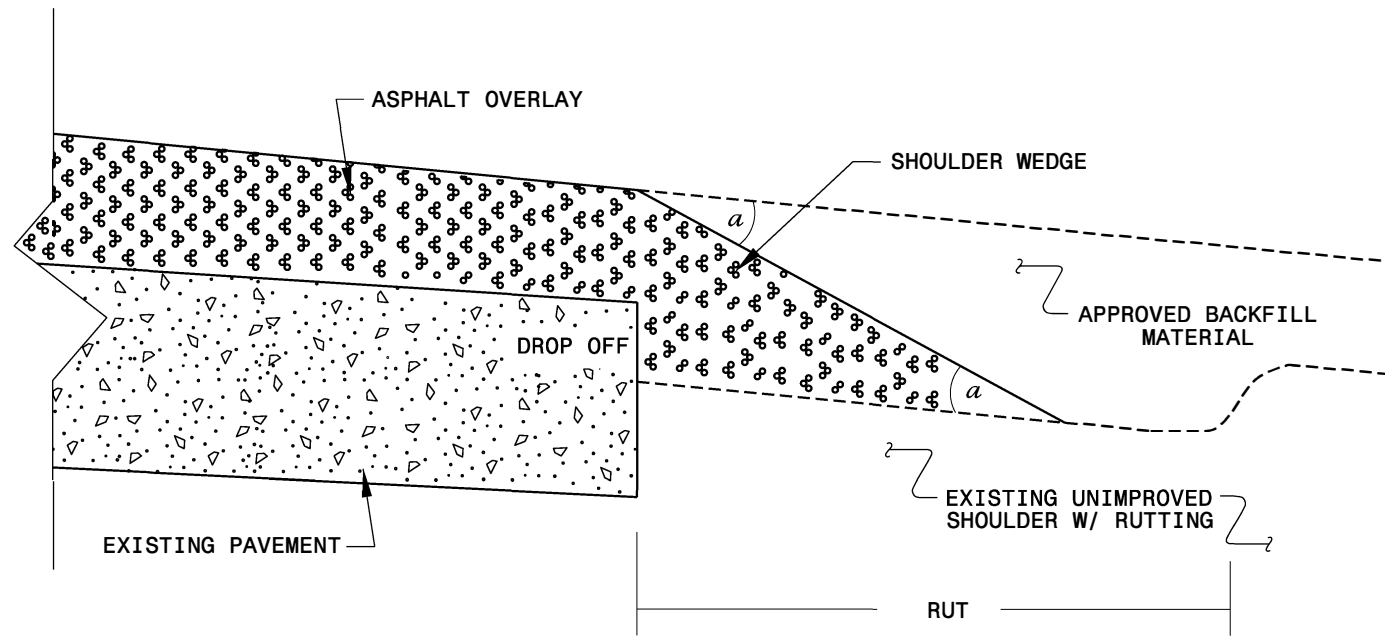
- NOTES:
- 1) DETAIL DOES NOT APPLY TO OGAFc AND ULTRA-THIN BONDED WEARING COURSE.
 - 2) BACKFILL SHOULDER WITH APPROVED MATERIAL.
 - 3) THE SHOULDER WEDGE DEVICE MAY BE DISENGAGED AT PAVED DRIVEWAYS, SIDE STREETS, HIGH SHOULDERS, AND OTHER LOCATIONS NOT FEASIBLE TO CONSTRUCT AS APPROVED BY THE ENGINEER.



SHOULDER WEDGE DETAIL
 (Resurfacing Projects w/ Widening or
 with Existing Paved Shoulder having no dropoffs)



SHOULDER WEDGE DETAIL
 (Resurfacing Projects w/ NO Widening)



SHOULDER WEDGE DETAIL
 (Resurfacing Adjacent to
 Rutted Shoulder)

- SHOULDER WEDGE ANGLE = 30°

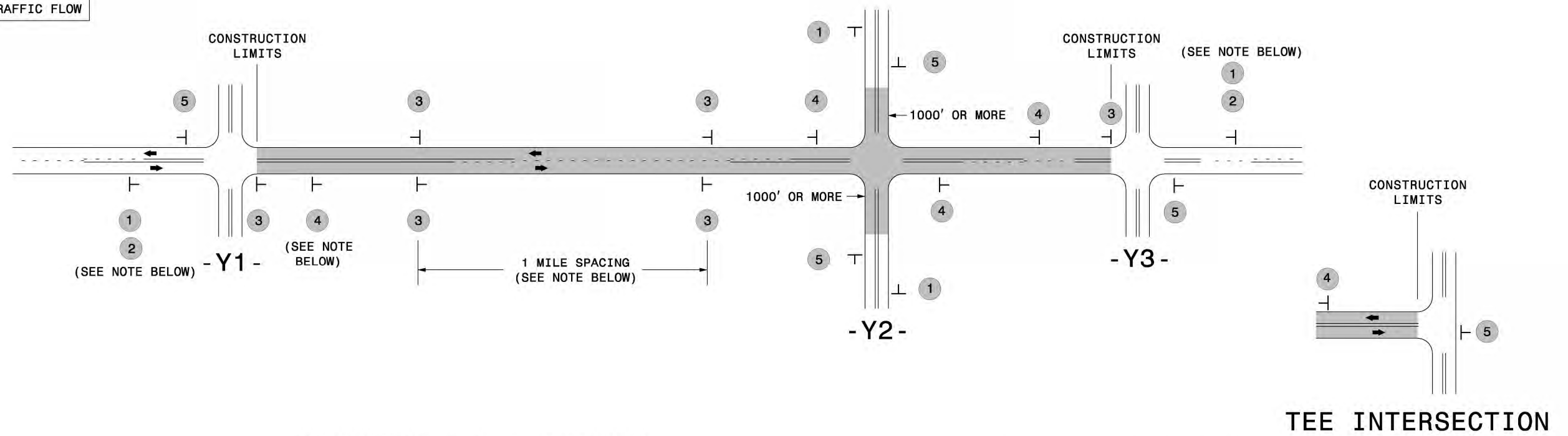
CONTRACT STANDARDS
 AND DEVELOPMENT UNIT
 Office 919-707-6950 FAX 919-250-4119

**SHOULDER WEDGE
 DETAILS**

ORIGINAL BY: T.SPELL DATE: 7-19-11
 MODIFIED BY: DATE: 2/2/16
 CHECKED BY: DATE:
 FILE SPEC.: s:\usr\details\stand\shoulderwedgedetail.dgn

SIGNING FOR RESURFACING PROJECTS

LEGEND
 ┆ STATIONARY SIGN
 ← DIRECTION OF TRAFFIC FLOW



MAINLINE (-L-) SIGNING

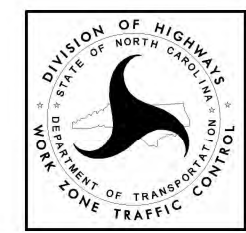
-Y- LINE SIGNING

SIGNING NOTES AND PLACEMENT PER DIRECTION	1		PLACE 1000' PRIOR TO BEGINNING OF CONSTRUCTION LIMITS. ONLY USED ON -Y- LINES IF RESURFACING LIMITS EXTEND 1000' ALONG -Y- LINE.	<p>NO REQUIRED STATIONARY SIGNING FOR THE FOLLOWING -Y- LINE CONDITIONS:</p> <ol style="list-style-type: none"> 1) LESS THAN 1000' OF RESURFACING ALONG -Y- LINE 2) SUBDIVISION ROADS 3) DEAD END ROADS <p>WHEN PAVING/CONSTRUCTION ACTIVITIES PROCEED ACROSS AN UNSIGNED -Y- LINE, PORTABLE ADVANCE WARNING SIGNS SHALL BE USED ALONG THE -Y- LINE AS SHOWN BELOW. REMOVE UPON COMPLETION OF WORK.</p> <div style="display: flex; justify-content: space-around;"> <div style="text-align: center;"> PLACED 500' IN ADVANCE OF FLAGGER. </div> <div style="text-align: center;"> PLACED 250' IN ADVANCE OF FLAGGER. </div> </div>
	2		#2 SIGN ONLY USED WHEN CONSTRUCTION LIMITS ARE 2 OR MORE MILES IN LENGTH. ROUND UP TO NEXT WHOLE NUMBER. (NO FRACTIONAL OR DECIMAL NUMBERS)	
	3		- PLACE INITIALLY AT THE CONSTRUCTION LIMITS AND SPACE 1 MILE APART THEREAFTER. - AT TEE INTERSECTIONS INSTALL INITIALLY 1/2 MILE FROM INTERSECTION AND SPACE 1 MILE APART THEREAFTER.	
	4		- THESE ARE FOR -Y- LINES THAT ARE "THROUGH" ROADWAYS. - DEAD END AND SUBDIVISION ROADS ARE NOT "THROUGH" ROADWAYS. - INSTALL 500' +/- FROM EACH -Y- LINE APPROACH AS SHOWN ABOVE. - FOR MULTIPLE -Y- LINES THAT ARE SEPARATED BY 0.25 MILES OR LESS, TREAT AS A SINGLE UNIT AND INSTALL WITHIN 500' OF EACH APPROACH. - A MAXIMUM OF 2 SIGN SETS PER MILE. DO NOT INSTALL WHEN -Y- LINES ARE WITHIN 0.5 MILES FROM "END ROAD WORK" SIGN. - FOR TEE INTERSECTIONS, INSTALL WITHIN 500' +/- OF THE INTERSECTION ALONG -L- LINE.	
	5		PLACE 500' FOLLOWING THE END OF CONSTRUCTION LIMITS OR AS SHOWN WHEN WORK ENDS AT A 3-WAY TEE INTERSECTION.	

THE ABOVE SIGNS ARE ALL THAT ARE REQUIRED FOR A CONTRACTOR TO BEGIN A RESURFACING CONTRACT. ANY ADDITIONAL SIGNS REQUESTED BY NCDOT DIVISIONS SHALL BE INSTALLED WITHIN 7 BUSINESS DAYS OF THE START OF CONTRACT WORK.

MAPS LESS THAN 2 MILES

FOR RESURFACING MAPS WITH CONSTRUCTION LIMITS LESS THAN 2 MILES IN LENGTH, NO STATIONARY SIGNS ARE REQUIRED. USE PORTABLE "ROAD UNDER CONSTRUCTION" OR "ROAD WORK AHEAD" SIGNS IN LIEU OF STATIONARY ADVANCE WARNINGS SIGNS.



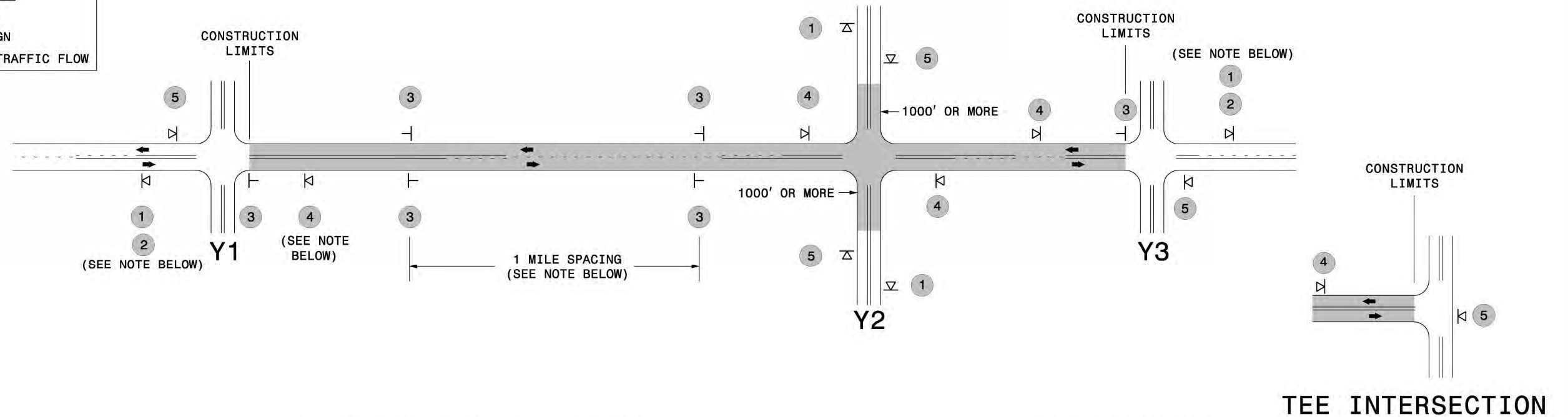
ADVANCE WARNING SIGNS FOR RURAL AND SUBURBAN 2-LANE ROADWAY RESURFACING

5/15/2017 S:\T\13\WZTC\Resurfacing\2L2W & AST Resurfacing Details\Resurfacing_AdvWarn_2Ln.dgn User:keads

SIGNING FOR ASPHALT SURFACE TREATMENT

LEGEND

- ▷ PORTABLE SIGN
- └ STATIONARY SIGN
- ← DIRECTION OF TRAFFIC FLOW



MAINLINE (-L-) SIGNING

-Y- LINE SIGNING

SIGNING NOTES AND PLACEMENT PER DIRECTION	1		PLACE 1000' PRIOR TO BEGINNING OF CONSTRUCTION LIMITS. ONLY USED ON -Y- LINES IF RESURFACING LIMITS EXTEND 1000' ALONG -Y- LINE.
	2		SIGN #2 ONLY USED WHEN RESURFACING LIMITS ARE 2 OR MORE MILES IN LENGTH. ROUND UP TO THE NEAREST WHOLE NUMBER. DO NOT USE FRACTIONAL OR DECIMAL NUMBERS.
	3	 	ALTERNATE THE FOLLOWING TWO SIGNS: - STARTING WITH "LOOSE GRAVEL" (W8-7) FOLLOWED BY "UNMARKED PAVEMENT". - PLACE INITIALLY AT THE CONSTRUCTION LIMITS AND SPACED 1 MILE APART THEREAFTER. - AT TEE INTERSECTIONS INSTALL INITIALLY 0.5 MILE FROM INTERSECTION AND SPACE 1 MILE APART THEREAFTER.
	4		THESE ARE FOR -Y- LINES THAT ARE "THROUGH" ROADWAYS. DEAD END AND SUBDIVISION ROADS ARE NOT "THROUGH" ROADWAYS. - INSTALL 500' +/- FROM EACH -Y- LINE APPROACH AS SHOWN ABOVE. - FOR MULTIPLE -Y- LINES THAT ARE SEPARATED BY 0.25 MILES OR LESS, TREAT AS A SINGLE UNIT AND INSTALL WITHIN 500' OF EACH APPROACH. - A MAXIMUM OF 2 SIGN SETS PER MILE. DO NOT INSTALL WHEN -Y- LINES ARE WITHIN 0.5 MILES FROM "END ROAD WORK" SIGN.
	5		PLACE 500' FOLLOWING THE END OF CONSTRUCTION LIMITS OR AS SHOWN WHEN WORK ENDS AT A 3-WAY TEE INTERSECTION.

STATIONARY SIGNING NOT REQUIRED FOR THE FOLLOWING -Y- LINE CONDITIONS:

- 1) LESS THAN 1000' OF RESURFACING ALONG -Y- LINE
- 2) SUBDIVISION ROADS
- 3) DEAD END ROADS

WHEN PAVING/CONSTRUCTION ACTIVITIES PROCEED ACROSS AN UNSIGNED -Y- LINE, PORTABLE ADVANCE WARNING SIGNS SHALL BE USED ALONG THE -Y- LINE AS SHOWN BELOW. REMOVE UPON COMPLETION OF WORK.



PLACED 500' IN ADVANCE OF FLAGGER.

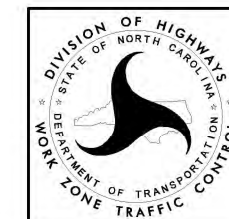


PLACED 250' IN ADVANCE OF FLAGGER.

THE ABOVE SIGNS ARE ALL THAT ARE REQUIRED FOR A CONTRACTOR TO BEGIN A RESURFACING CONTRACT. ANY ADDITIONAL SIGNS REQUESTED BY NCDOT DIVISIONS SHALL BE INSTALLED WITHIN 7 BUSINESS DAYS OF THE START OF CONTRACT WORK.

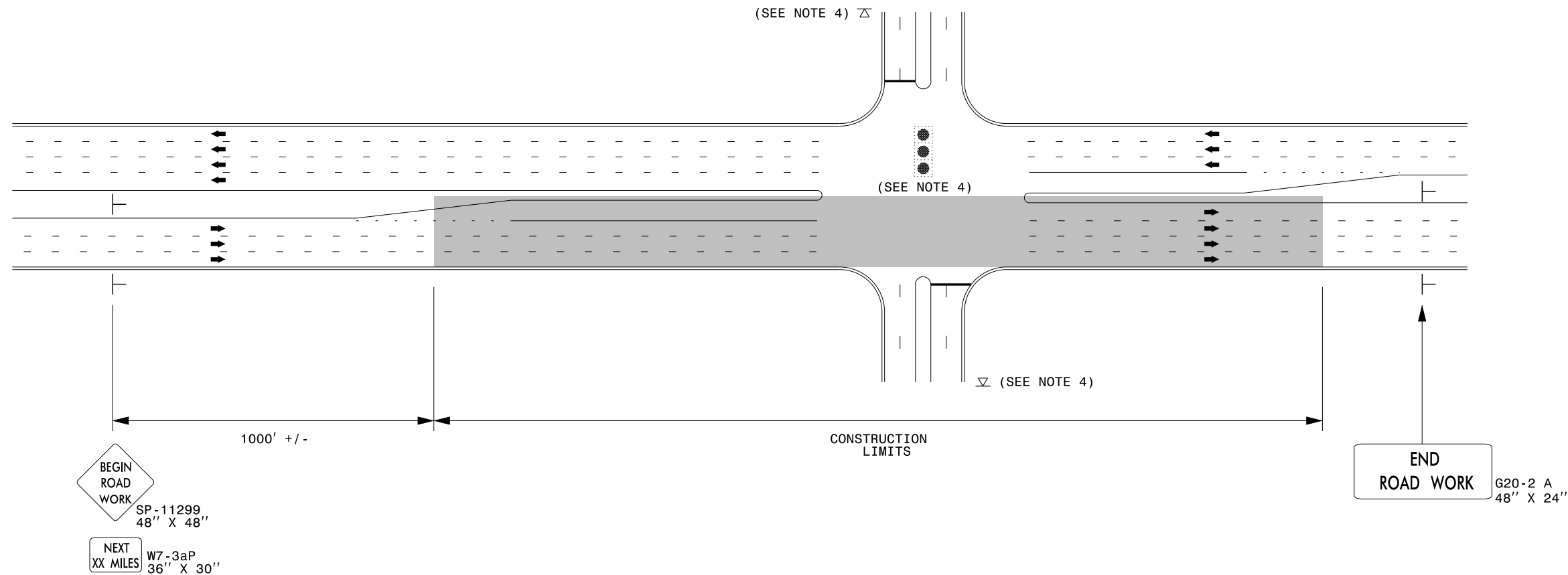
MAPS LESS THAN 2 MILES

FOR AST RESURFACING MAPS WITH CONSTRUCTION LIMITS LESS THAN 2 MILES IN LENGTH, USE A STATIONARY "LOOSE GRAVEL" SIGN AT THE BEGINNING CONSTRUCTION LIMIT FOLLOWED BY AN "UNMARKED PAVEMENT" SIGN MIDWAY THROUGH AND AN "END ROAD WORK" SIGN AT THE END CONSTRUCTION LIMIT.



ADVANCE WARNING SIGNS FOR 2-LANE ROADWAY ASPHALT SURFACE TREATMENT

URBAN / SUBURBAN WORKZONES



NOTES:

- 1) 48" x 48" SIZED SIGNS (SP- 11299) MAY BE REDUCED TO 36" X 36" ON ROADWAYS WITH SPEED LIMITS OF 40 MPH OR LESS.
- 2) MOUNT SIGNS THAT ARE LARGER THAN 10 SQUARE FEET IN AREA ON TWO OR MORE WOOD OR U-CHANNEL SUPPORTS. PERFORATED SQUARE TUBING SUPPORT SYSTEMS MAY SUPPORT LARGER AREAS ON A SINGLE SUPPORT. FOLLOW MANUFACTURER'S RECOMMENDATIONS. THESE SYSTEMS SHALL BE NCHRP 350 COMPLIANT AND NCDOT APPROVED.
- 3) ADVANCE WARNING SIGNS NOT REQUIRED ON NON-SIGNALIZED SIDE STREETS.
- 4) MAY USE LAW ENFORCEMENT TO CONTROL TRAFFIC AT SIGNALIZED INTERSECTIONS AS DIRECTED BY THE ENGINEER. PROVIDE PORTABLE "ROAD WORK AHEAD" (W20-1) SIGNS 500' IN ADVANCE ALONG BOTH APPROACHES FROM THE SIDE STREETS WHEN PAVING PROCEEDS THROUGH THE INTERSECTION.
- 5) LATERAL CLEARANCE AT ALL SIGN LOCATIONS SHALL BE 2' AS MEASURED FROM THE EDGE OF PAVEMENT OR THE FACE OF THE CURB. WHEN UNABLE TO OBTAIN THE LATERAL CLEARANCE WITHIN THE MEDIAN AREA USE SHOULDER MOUNTS ONLY.
- 6) SIGN MOUNT LOCATIONS SHALL NOT BLOCK SIDEWALKS OR DRIVEWAYS.
- 7) IF STATIONARY GENERAL WARNING SIGNS ARE USED, THEY WILL BE PAID FOR PER SECTION 104 OF THE NCDOT STANDARD SPECIFICATIONS AS EXTRA WORK.
- 8) IF MILLED AREAS ARE NOT PAVED BACK BY THE END OF THE WORK DAY, PORTABLE SIGNS SHALL BE USED TO WARN DRIVERS OF THE PRESENT CONDITIONS. THESE ARE TO INCLUDE, BUT NOT LIMITED TO "ROUGH ROAD" W8-8, "UNEVEN LANES" W8-11, "GROOVED PAVEMENT" W8-15 w/MOTORCYCLE PLAQUE MOUNTED BELOW. THESE ARE TO BE DOUBLE INDICATED ON MULTI-LANE ROADWAYS WITH SPEED LIMITS 45 MPH AND GREATER WHERE LATERAL CLEARANCE CAN BE OBTAINED WITHIN THE MEDIAN AREAS. THESE PORTABLE SIGNS ARE INCIDENTAL TO THE OTHER ITEMS OF WORK INCLUDED IN THE TEMPORARY TRAFFIC CONTROL (LUMP SUM) PAY ITEM.

LEGEND

- ┆ STATIONARY SIGN
- ➔ DIRECTION OF TRAFFIC FLOW



**RESURFACING ADVANCE
WARNING SIGNS FOR
URBAN / SUBURBAN
FACILITIES**